

# Prelos™ 1500 Gravity Processor

## Applications

Orenco's Prelos™ 1500 Gravity Processors provide complete, integrated storage, filtration, and discharge of wastewater for on-lot portions of Prelos Sewer™ systems and other pressurized, liquid-only sewers or dispersal systems where gravity discharge is possible.

## General

Prelos Processors™ are the core of the Prelos Sewer system: an innovative technology based on 40 years of proven sewer solutions.

The Prelos 1500 Gravity Processor's tank\* stores and passively treats solid waste, while the PSC-series Biotube® effluent filter separates solids from liquid effluent before the effluent flows by gravity to a liquid-only sewer line. The standard 30-in. (750-mm) diameter access riser and optional additional 24-in. (600-mm) diameter access riser provide easy access to the tank interior, and the filter's passively self-cleaning design extends maintenance cycle intervals.

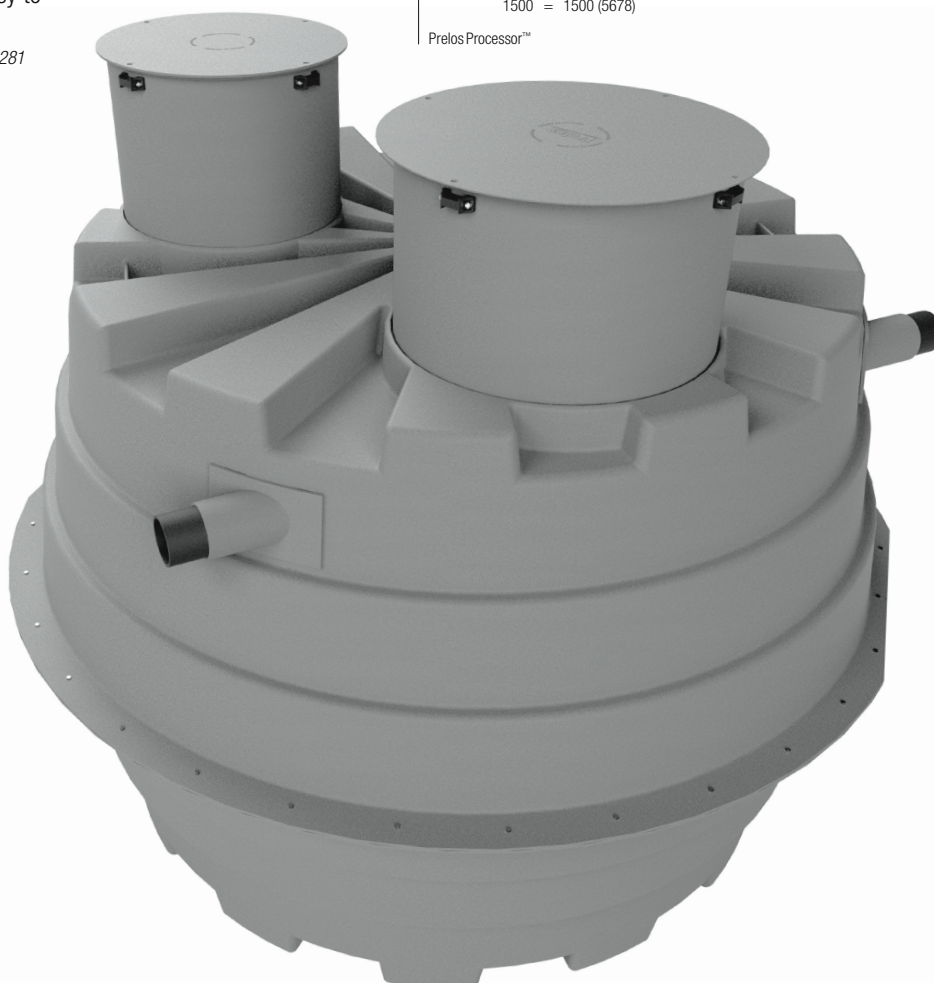
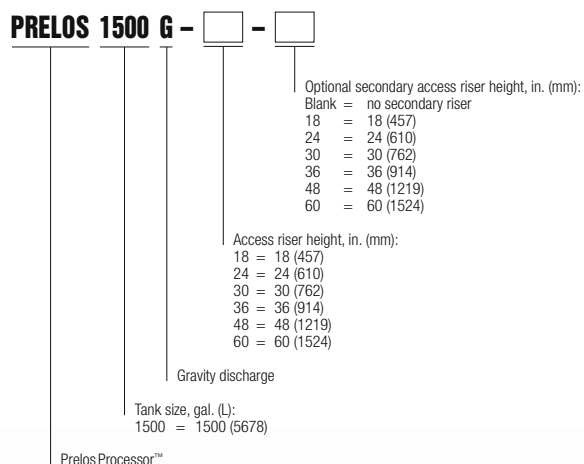
All Prelos Processors install as a unit, to reduce errors. And their components are easy to access and service.

\* Tank covered under United States Patent #10,392,281

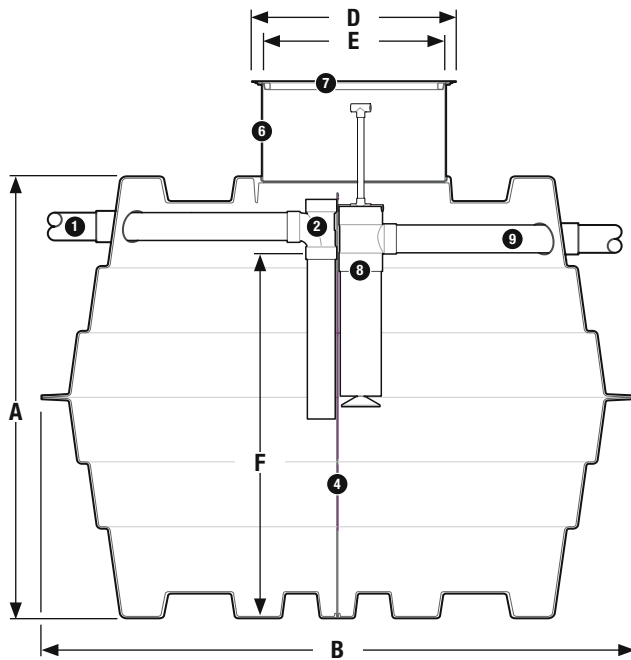
## Selected Models

PRELOS1500G-18, PRELOS1500G-24, PRELOS1500G-36, PRELOS1500G-24-24, PRELOS1500G-36-36

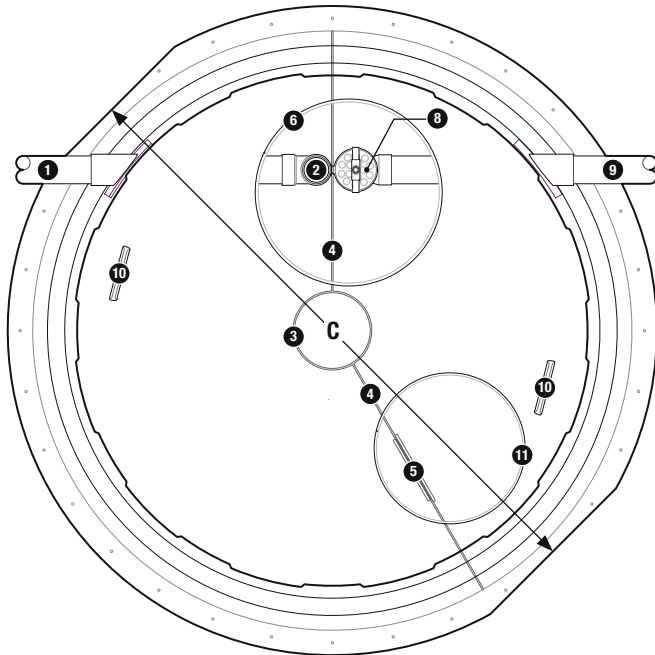
## Product Code Diagram



*Prelos™ 1500 Gravity Processors offer complete, integrated storage and filtration of wastewater in a simple, effective package.*



*Side sectional view*



*Top sectional view*

- |                             |                       |                           |
|-----------------------------|-----------------------|---------------------------|
| 1 Inlet                     | 5 Baffle pass-through | 9 Outlet                  |
| 2 Inlet tee                 | 6 Access riser        | 10 Lifting bracket        |
| 3 Support column            | 7 Access lid          | 11 Secondary access riser |
| 4 Baffle wall (full-length) | 8 Biotube® filter     |                           |

## Tank, Riser, and Lid

The Prelos 1500 Gravity Processor's meander-style tank has a patented design for superior performance. It's tough, impact-resistant, and light enough to install with small equipment. The 30-in. (750-mm) diameter primary access riser and access lid are designed to provide strong, secure access to components inside of the Prelos 1500 Gravity Processor. A 24-in. (600-mm) diameter secondary riser is also available.

### Materials of Construction

Access lid	Fiberglass, structural foam
Access lid hardware	Stainless steel
Access riser	Fiberglass
Inlet and inlet tee	ABS
Baffle wall	ABS
Support column	PVC, ABS
Tank body	DCPD

### Dimensions

A. Tank height, in. (mm)	72 (1829)
B. Tank outside diameter, in. (mm)	105 (2667)
C. Tank width, flat-to-flat, in. (mm)	101 (2565)
D. Lid outside diameter, in. (mm)	33 (838)
E. Standard riser inside dia., in. (mm)	29.5 (749)
F. Depth, nominal operating volume, in. (mm)	57 (1448)
Optional secondary riser lid outside dia., in. (mm)	24 (610)
Optional secondary riser inside dia., in. (mm)	23.5 (597)
Tank nominal operating volume, gal. (L)	1500 (5678)
Tank total volume, gal. (L)	1788 (6768)
Average volume at operating depth, gal./in. (L/mm)	25 (4)
Prelos Processor weight, nom., lbs (kg)	660-770 (300-350)

## PSC-Series Biotube<sup>®</sup> Effluent Filter

The PSC-series Biotube<sup>®</sup> effluent filter used in the Prelos 1500 Gravity Processor is designed for effective filtration of solids from liquid effluent, before the effluent is transported to a liquid-only sewer, other collection system, or dispersal. The passively self-cleaning design extends maintenance cycle intervals.

### Materials of Construction

Housing	PVC, ABS
Filter tubes	Polypropylene
Handle assembly	Sch. 40 PVC
Screws	Stainless steel

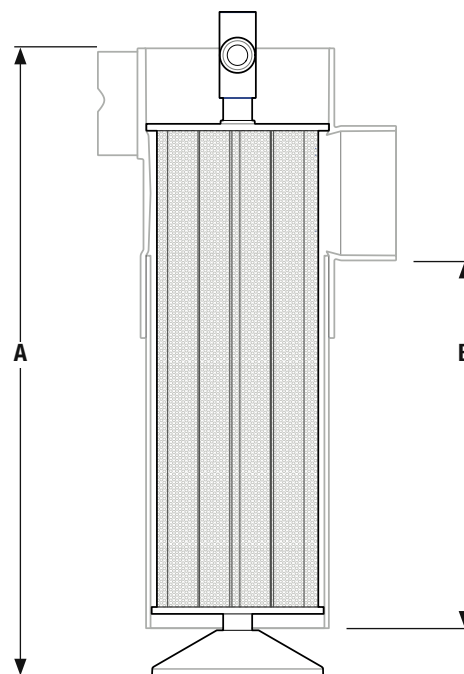
### Dimensions in. (mm)

A. Overall height	22.7 (577)
B. Height to invert	13.5 (343)

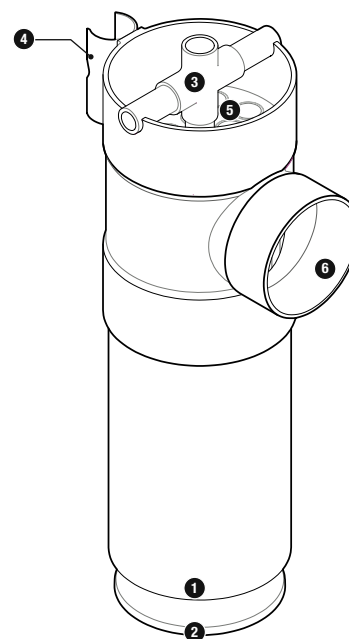
### Performance

Biotube <sup>®</sup> mesh opening, in. (mm)*	0.125 (3)
Total filter flow area, ft <sup>2</sup> (m <sup>2</sup> )	1.9 (0.18)
Total filter surface area, ft <sup>2</sup> (m <sup>2</sup> )	6.3 (0.59)

\*0.062-in. (1.6-mm) filter mesh available



Side cutaway view, PSC filter



Isometric view, PSC effluent filter

- ❶ Filter inlet end
- ❷ Deflector plate
- ❸ Handle
- ❹ Float switch bracket (optional)
- ❺ Biotube filter cartridge
- ❻ Filter outlet