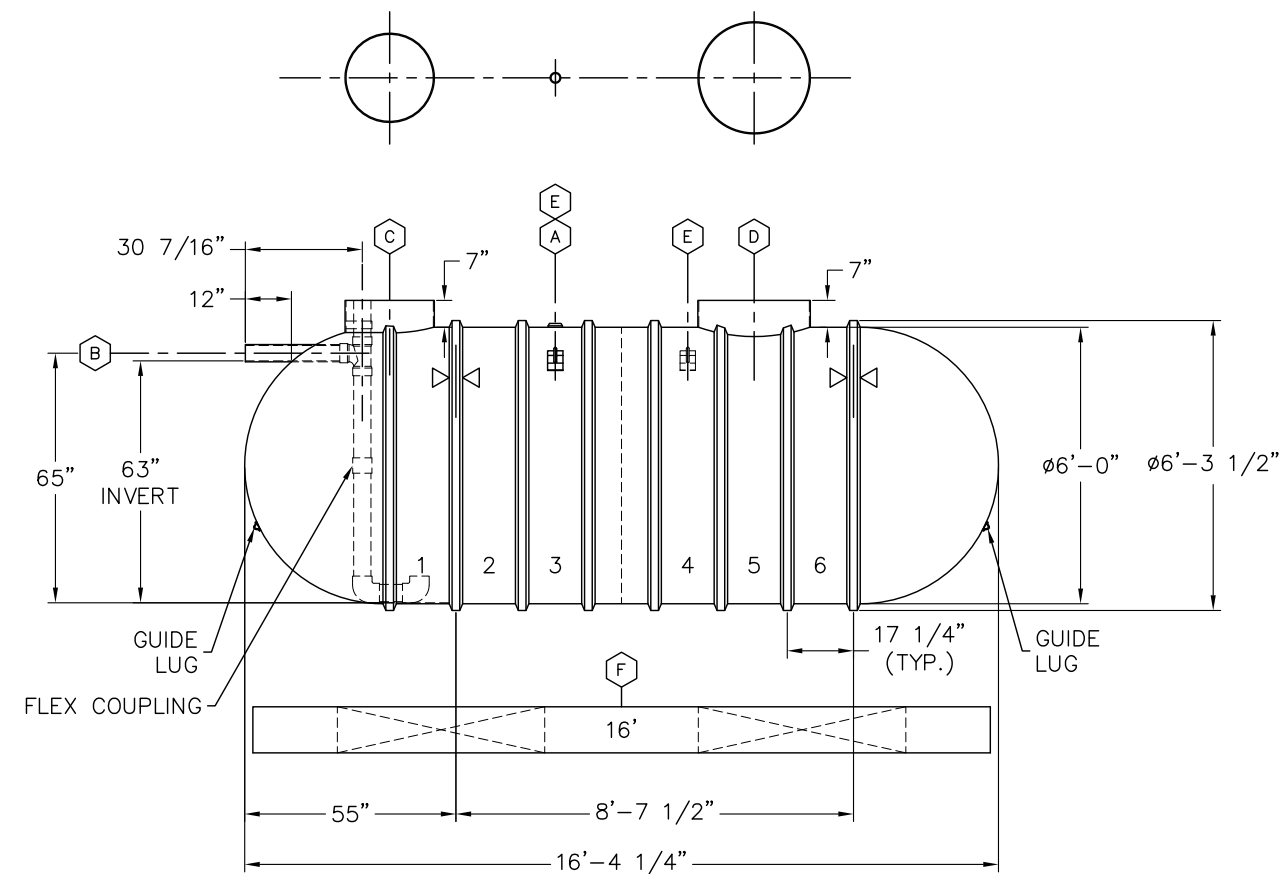


- NOTES:
1. INVERT DIMENSION FROM TANK I.D.
 2. NOMINAL TANK WEIGHT : 1,600 lbs



ITEM	QTY	DESCRIPTION
(A)	1	2"NPT SERVICE FITTING
(B)	1	4"DIA SCH 40 PVC INLET PIPE, INTERNAL SANITARY TEE & PIPES WITH SMOOTHING INLET & FLEXIBLE COUPLING
(C)	1	RISER PIPE, 23 3/8"O.D., FOR 24"(NOMINAL) ACCESS OPENING
(D)	1	RISER PIPE, 29 3/8"O.D., FOR 30"(NOMINAL) ACCESS OPENING
(E)	2	LIFTING LUG (10" x 4") 25", 25"
(F)	2	16' PREFABRICATED CONCRETE DEADMEN
▷◁	2	HOLD DOWN STRAP LOCATION

CUSTOMER
DESIGNATION:
RAINWATER CISTERN

00		REVISION DESCRIPTION			
DRN	DATE	CHK'D	DATE	APPR'D	DATE
XERXES BY SHAWCOR					
DRN	DATE	TITLE			
LJB	3-4-21	6' DIA SW			
CHK'D	DATE	CAP. 3,000 GALLONS			
PWM	3-4-21	BIO SOLUTIONS			
APPR'D	DATE	DR. SIZE	DR. NUMBER	REV	
-	-	B	668-373	00	
SALES MANAGER		SCALE:	SHT 1 OF 1		
DAVID HOLMES		N.T.S.			
INDUSTRY TYPE: M204 WATER COLLECTION AND CONSERVATION					