

Stormwater Catch Basin

Installation and O&M Instructions

Before You Begin

Before starting, familiarize yourself with the site plans and installation specifics. Check the site plans to confirm the location of the stormwater catch basin before you begin excavating. If no site plans are available, determine and sketch the exact positions of the inlet line, stormwater catch basin, and outlet line. Provide measurements and distances on the sketch as accurately as possible.

Installation Instructions

Step 1: Excavate Site

Overexcavate the hole to 6 inches (150 mm) deeper than the basin height and 6 inches (150 mm) wider than the basin diameter. The basin should have 3 inches (75 mm) clearance around it when placed in the hole.

Step 2: Lay and Compact Bed

Place and compact a 6-inch (150 mm) bed of aggregate or pea gravel in the excavation.

Step 3: Install Stormwater Catch Basin

Step 3a: Place the stormwater catch basin in the hole.

Step 3b: Use PVC cement to glue the inlet and outlet according to the flow arrows on the stormwater catch basin.

Step 3c: In areas where freezing is a concern, drill four 1/8-inch holes, 90° apart from one another, between the basin's bottom two ribs.

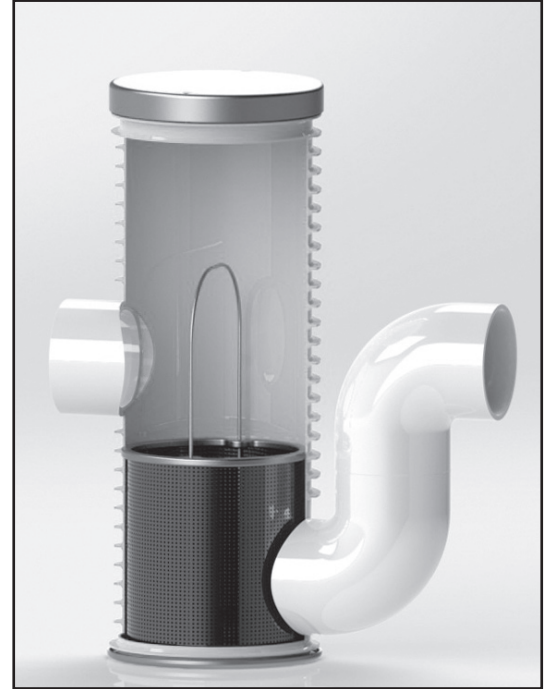
Step 4: Backfill Installation

Step 4a: Backfill around the unit with 6-inch (150-mm) lifts of material. Native material is acceptable if there are no large or sharp rocks that may damage the stormwater catch basin's walls. Do not use native material to backfill if it is primarily sand; very soft or highly expansive clay; or if it contains debris, large rocks (> 3/4-in. or 19-mm), sharp rocks, peat, or muck. In these cases, use ≤ 3/4-in. (≤ 19 mm) rounded gravel, crushed stone, or pea gravel as fill material. This material should be washed, free-flowing, and free of debris. Do not backfill with sand.

Step 4b: On basins over 36 inches (914 mm) tall, remove the lid and screen after every 6-inch (150-mm) lift to ensure that the sides of the basin do not compress and prevent the lid from fitting or prevent removal of the screen.

Step 4c: If necessary, shorten the top of the stormwater catch basin to within an inch or two (25-50 mm) of grade-level by cutting on-center between the basin's ribs.

NOTE: If shortening the top of the stormwater catch basin, maintain a minimum of 4 inches (100 mm) between the top of the inlet and the top of the basin.



SCB1236-6L

O&M Instructions

Step 1: Remove the Lid

Remove the lid from the stormwater catch basin and set the lid bolts aside.

Step 2: Inspect and Clean the Basin and Screen

Step 2a: Remove the screen from the stormwater catch basin.

Step 2b: Inspect the stormwater catch basin and the screen for debris or trash buildup and remove any that you find.

Step 2c: Clean the screen with water, if necessary.

Step 2d: Place the cleaned screen back inside of the stormwater catch basin.

Step 3: Reinstall the Lid

Replace any lid bolts that are missing or worn and reinstall the lid.

IMPORTANT: Make sure that all bolts are reinstalled and tightened!