

Control Panel Wiring Diagram Model MVP-DAX1 R0 CS SA



Oreco Systems®
Incorporated

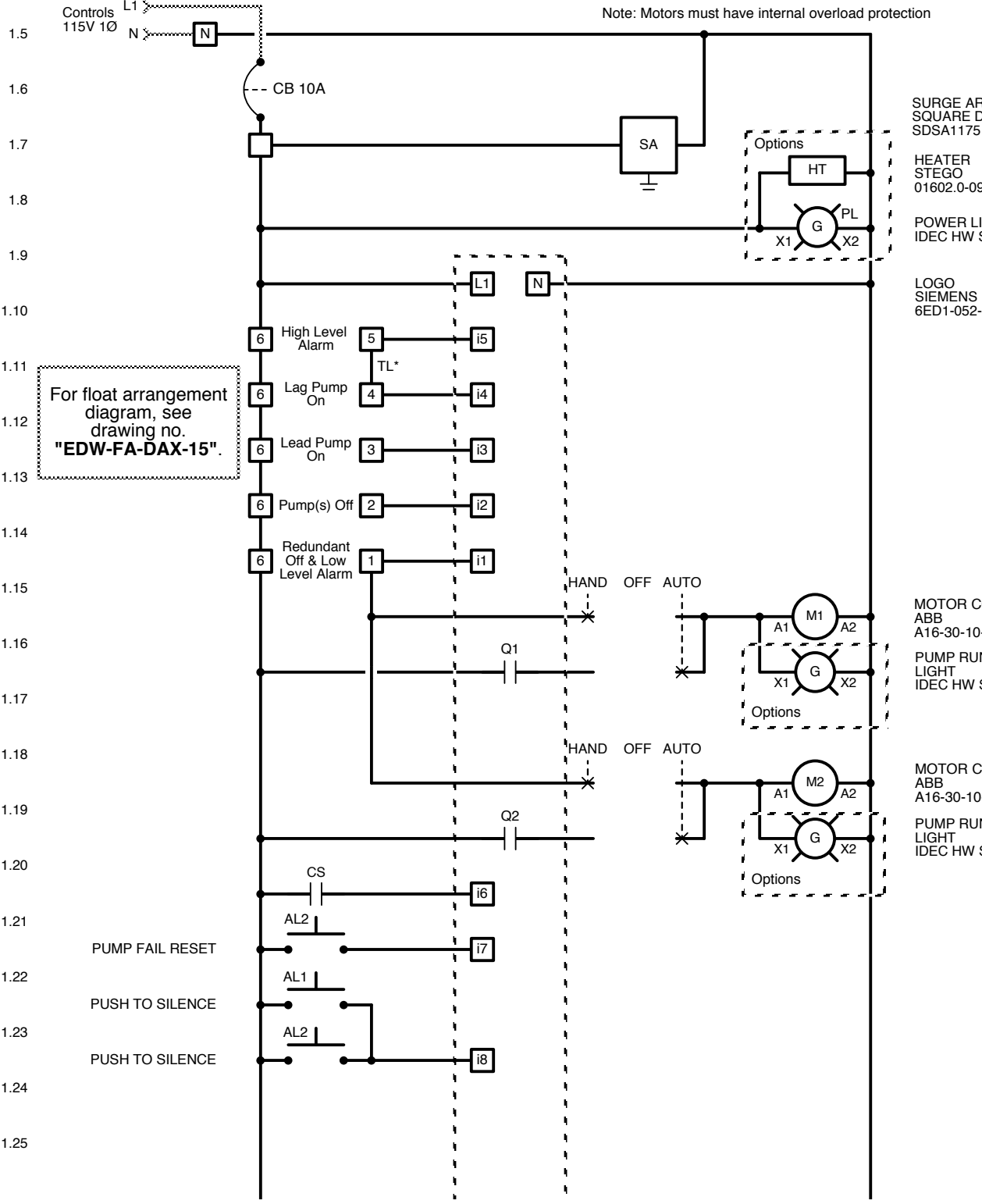
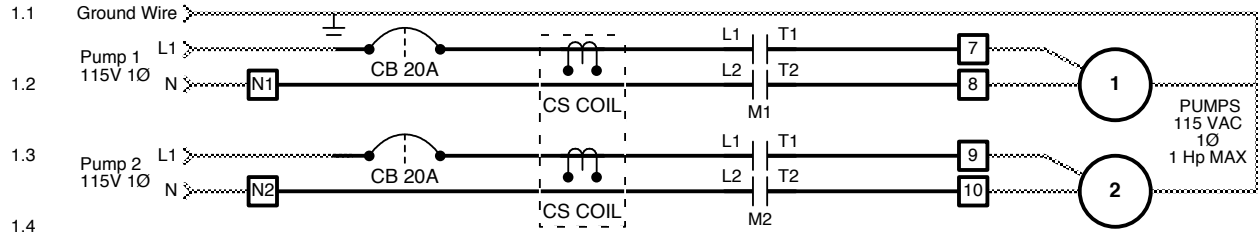
814 AIRWAY AVENUE
SUTHERLIN, OREGON
97479-9012

TELEPHONE:
(541) 459-4449

FACSIMILE:
(541) 459-2884

From Main Power Panel
115 VAC, 1 Phase, 60 Hz.
Main disconnect
provided by others.

— = Factory Wire
- - - = Field Wire



Note: Motors must have internal overload protection

SURGE ARRESTER
SQUARE D
SDSA1175

HEATER
STEGO
01602.0-09

POWER LIGHT
IDEC HW SERIES

LOGO
SIEMENS
6ED1-052-1FB00-0BA6

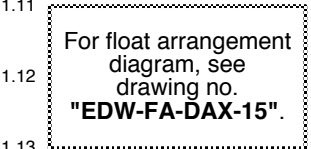
MOTOR CONTACTOR
ABB
A16-30-10-84

PUMP RUN
LIGHT
IDEC HW SERIES

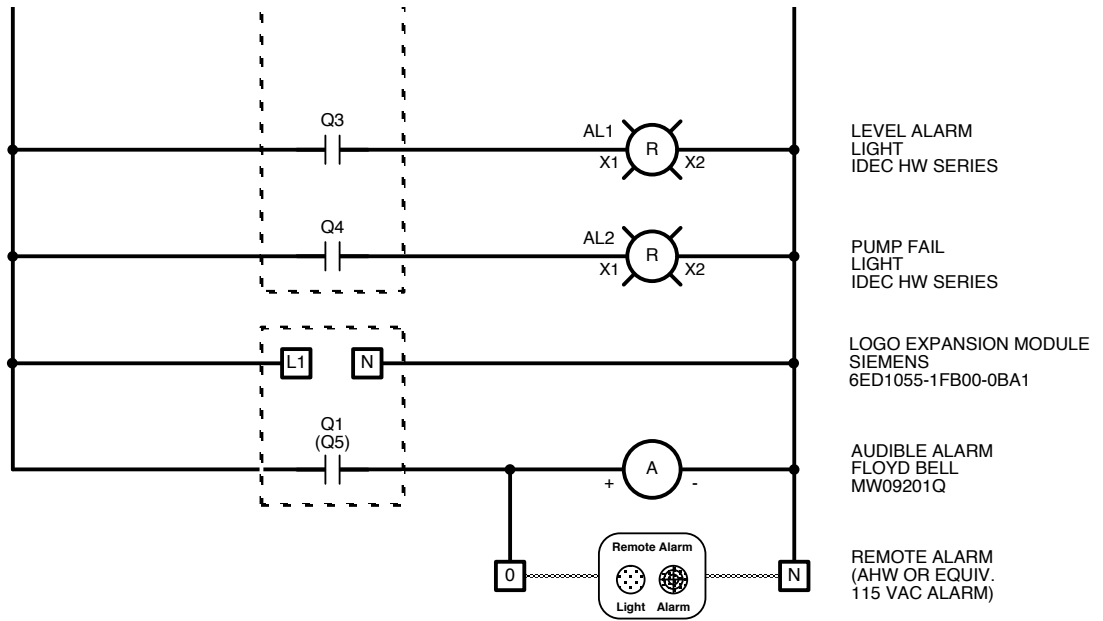
MOTOR CONTACTOR
ABB
A16-30-10-84

PUMP RUN
LIGHT
IDEC HW SERIES

For float arrangement
diagram, see
drawing no.
"EDW-FA-DAX-15".



2.1
2.2
2.3
2.4
2.5
2.6
2.7
2.8
2.9
2.10
2.11
2.12
2.13
2.14
2.15
2.16
2.17
2.18
2.19
2.20
2.21
2.22
2.23
2.24
2.25
2.26
2.27



*** Removal of Alarm / Lag Pump On Link Rail**

Removal of the terminal link rail will separate the high level alarm and lag pump on functions.

Terminal Link Rail

For MVP-DAX RO CS operation description, see drawing no. "EIN-CP-OP-239".

Power Wiring Options

Three Circuits
Factory default. Wire as shown.

Two Circuits
Use one wire nut to connect the pole of each pump circuit breaker together with the incoming L1 power line. Use another wire nut to connect the neutral block of each pump with the incoming neutral line.

One Circuit
Use one wire nut to connect the pole of each pump circuit breaker together with the controls breaker and with the incoming L1 power line. Use another wire nut to connect the neutral block of each pump with the controls neutral block and with the incoming neutral line.