

# Control Panel Wiring Diagram

## Model MVP-DAX1 DM CS



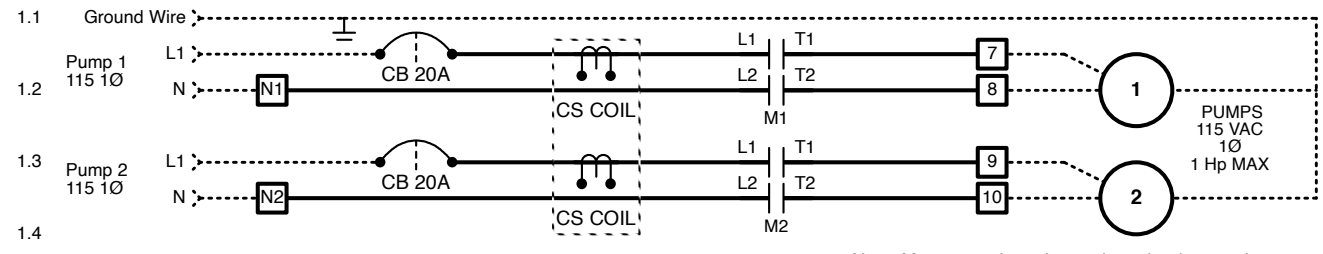
814 AIRWAY AVENUE  
SUTHERLIN, OREGON  
97479-9012

TELEPHONE:  
(800) 348-9843  
(541) 459-4449

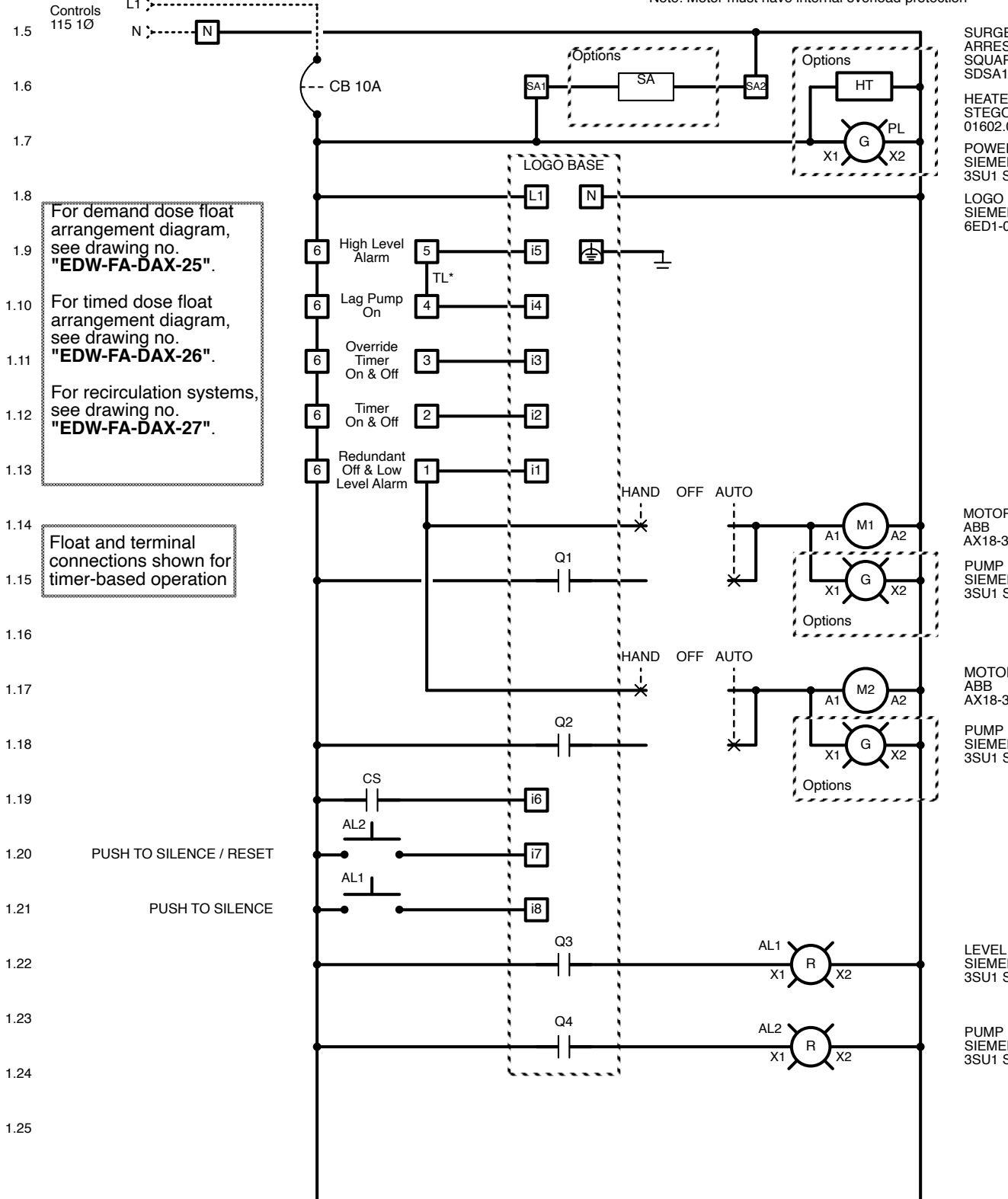
WEBSITE:  
www.orenco.com

From Main Power Panel  
115 VAC, 1 Phase, 60 Hz.  
Main disconnect  
provided by others.

— = Factory Wire  
- - - = Field Wire



Note: Motor must have internal overload protection



SURGE  
ARRESTOR  
SQUARED  
SDSA1175T

HEATER  
STEGO  
01602.0-09

POWER LIGHT  
SIEMENS  
3SU1 SERIES

LOGO  
SIEMENS  
6ED1-052-1FB08-0BA0

MOTOR CONTACTOR  
ABB  
AX18-30-10-84

PUMP RUN LIGHT  
SIEMENS  
3SU1 SERIES

MOTOR CONTACTOR  
ABB  
AX18-30-10-84

PUMP RUN LIGHT  
SIEMENS  
3SU1 SERIES

LEVEL ALARM LIGHT  
SIEMENS  
3SU1 SERIES

PUMP FAIL LIGHT  
SIEMENS  
3SU1 SERIES

For demand dose float  
arrangement diagram,  
see drawing no.  
"EDW-FA-DAX-25".

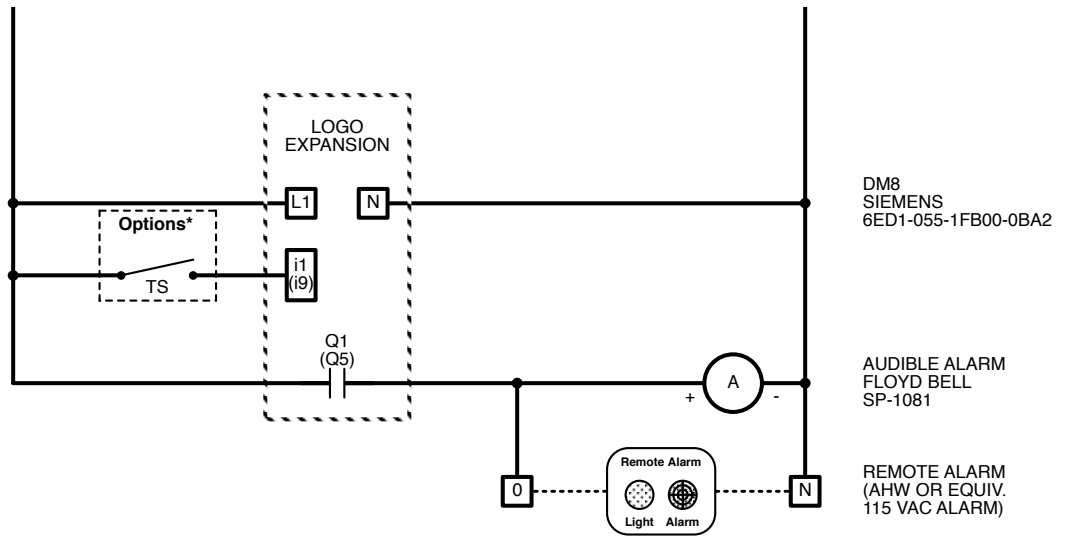
For timed dose float  
arrangement diagram,  
see drawing no.  
"EDW-FA-DAX-26".

For recirculation systems,  
see drawing no.  
"EDW-FA-DAX-27".

Float and terminal  
connections shown for  
timer-based operation

1.1  
1.2  
1.3  
1.4  
1.5  
1.6  
1.7  
1.8  
1.9  
1.10  
1.11  
1.12  
1.13  
1.14  
1.15  
1.16  
1.17  
1.18  
1.19  
1.20  
1.21  
1.22  
1.23  
1.24  
1.25

2.1  
2.2  
2.3  
2.4  
2.5  
2.6  
2.7  
2.8  
2.9  
2.10  
2.11  
2.12  
2.13  
2.14  
2.15  
2.16  
2.17  
2.18  
2.19  
2.20  
2.21  
2.22  
2.23  
2.24  
2.25  
2.26  
2.27



For MVP-DAX DM CS operation description, see drawing no. "EIN-CP-OP-2496".

