

M1500G Gravity Discharge Tank

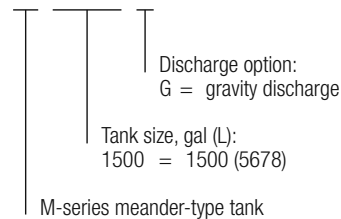
Applications

Orenco's watertight M-series molded DCPD tank* is optimized for multiple uses, including septic tanks and dosing tanks in onsite wastewater collection and treatment systems (commercial and residential), as well as in community-wide, liquid-only sewer systems. It collects and digests organic matter, providing primary wastewater treatment by reducing BOD and TSS by 65% and 70% or better, respectively.**

These tanks are not tested for use with potable water.

Product Code Diagram

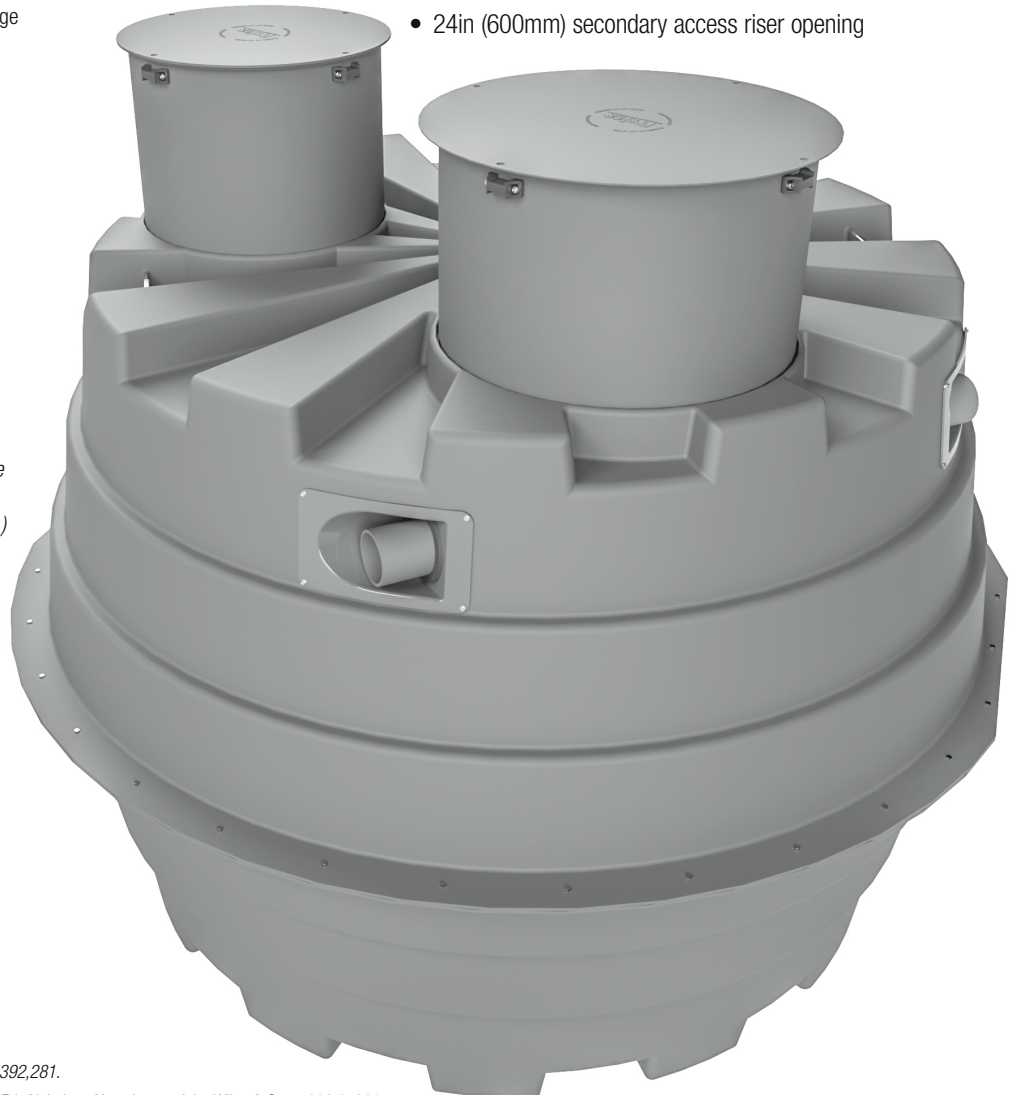
M 1500 G



Features

- 1500gal (5678L) meander-type tank for longer settling times and better solids retention
- Baffle wall provides two-thirds/one-third tank split
- 100% watertight design; each assembled tank is tested for watertightness before shipping
- DCPD construction for structural durability and chemical resistance
- Injection molded for unmatched consistency and quality
- Sized for transport by a light pickup or small trailer
- Lightweight enough for lifting and installation with a backhoe
- Ideal for small and tight lots
- 30in (750mm) access riser opening
- 24in (600mm) secondary access riser opening

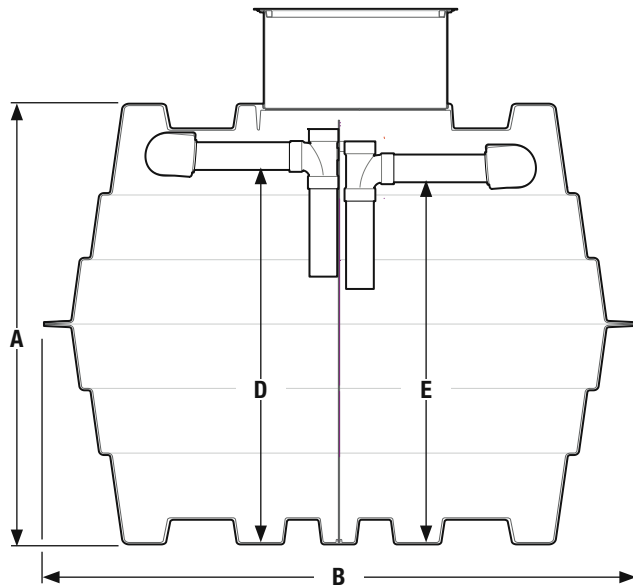
Orenco's watertight M1500G tanks are lightweight, durable, and versatile. (Access risers and lids sold separately.)



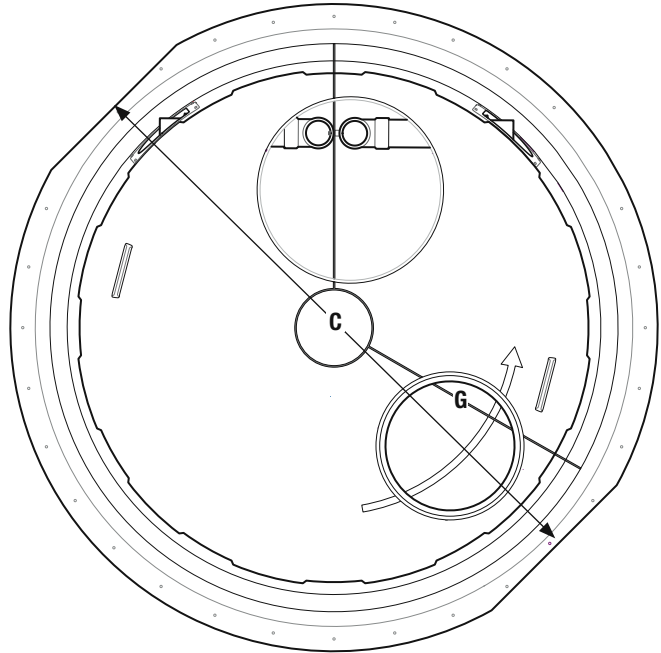
* Tank covered under United States Patent #10,392,281.

** Gabriel Bitton, Wastewater Microbiology, 3rd Ed. (Hoboken, New Jersey: John Wiley & Sons, 2005), 361.

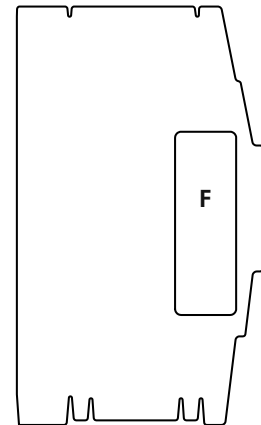
Note: Listed by IAPMO/UPC. These tanks are not designed for use in a location that receives vehicle traffic. Placement in a traffic area requires an engineered traffic-bearing pad.



Side sectional view, M1500G (access risers and lids sold separately)



Top sectional view, M1500G



Baffle wall profile showing flow-through port

Materials of Construction

Inlet	Fiberglass, ABS
Tank body	DCPD
Support column	PVC, ABS
Baffle wall	ABS
Outlet	Fiberglass, ABS

Specifications

Tank nominal operating volume, gal (L)	1500 (5678)
Tank total volume, gal (L)	1788 (6768)
Average volume at operating depth, gal/in (L/mm)	25 (4)
Weight, nom, lbs (kg)	500 (227)
A. Tank height, in (mm)	72 (1829)
B. Tank outside diameter, in (mm)	105 (2667)
C. Tank width, flat-to-flat, in (mm)	101 (2565)
D. Invert of inlet height, in (mm)	61 (1549)
E. Invert of outlet height, in (mm)	59 (1499)
F. Flow-through port area, in ² (m ²)	299.1 (0.193)
G. Baffle wall location	