

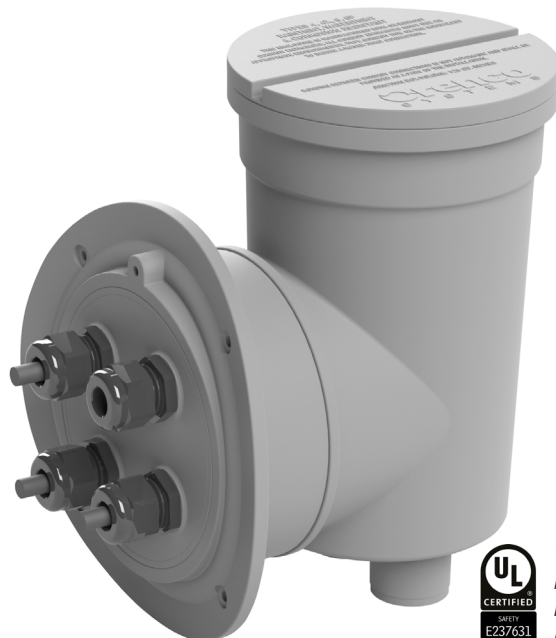
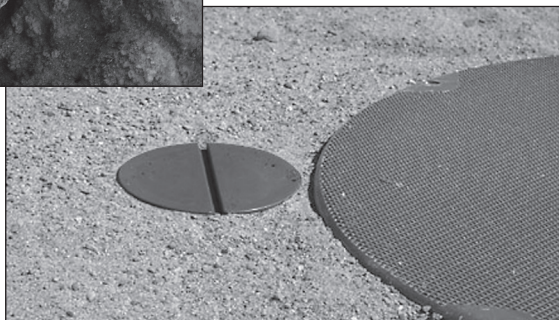
External Splice Box

Applications

Orenco's External Splice Box is engineered specifically for pressurized water and wastewater treatment systems and is especially suited for use in locations prone to high groundwater and other wet conditions. It attaches outside the access riser of an underground tank.



Attached outside the riser, Orenco's External Splice Box allows an electrician to access pump wiring without opening the riser lid.



The External Splice Box is molded PVC. It has a UL Type 6P listing for prolonged submergence.

Standard Features & Benefits

- Watertight for prolonged submergence per UL listing (Type 6P)
- Attaches outside of access riser to allow inspection without opening riser lid
- Allows more equipment or increased working room in riser, or use of a smaller-diameter riser
- Volume of 126 in.³ (2065 cm³) allows easy wiring access and accommodates multiple wiring configurations
- Bottom entry allows conduit or direct-bury cable to always remain below minimum burial depth
- Molded of UV-resistant PVC, suitable for cold weather exposure and outdoor applications
- Includes a riser adapter designed to provide a watertight connection between the splice box and riser
- Includes three cord grip plugs to seal unused cord grips

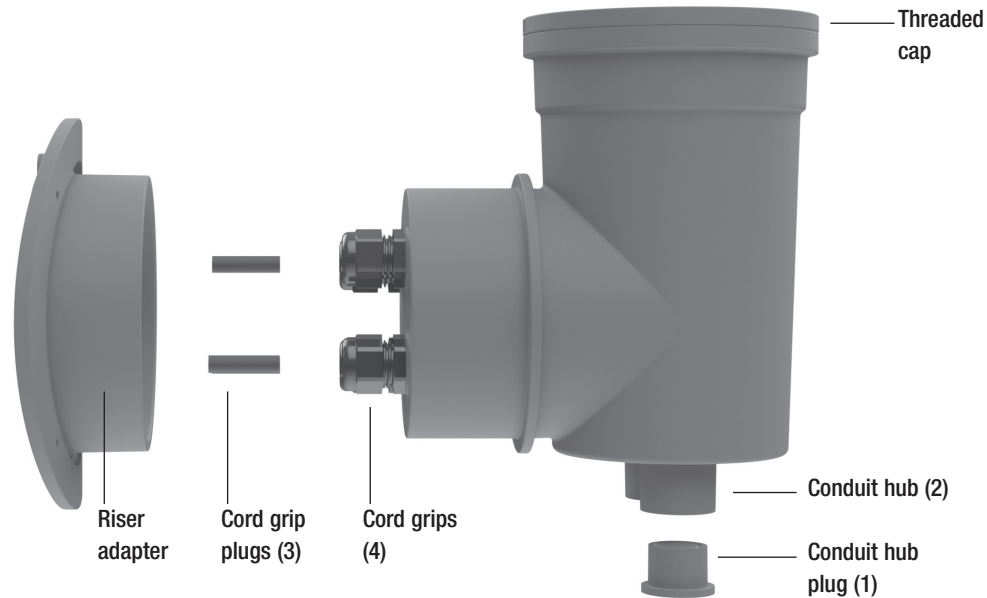
Optional Features & Benefits

- Can be supplied with divider plates that separate the splice box into two compartments, with two cord grips and one conduit hub in each compartment
- Allows for two sets of wiring runs (Class I and either Class II or Class III) for high and low voltage; includes a PVC conduit plug for closing off the second conduit hub if not used

To Order

Find your nearest Orenco Distributor by calling Orenco at 800-348-9843 or clicking "Distributor Locator" at orenco.com.

External Splice Box Components



Physical Specifications

Volume of junction box	126 in. ³ (2065 cm ³)
Cord grips	4
Cord grip plugs	3
Cord diameters accommodated	0.170-0.470 in. (4.3-11.9 mm)
Conduit hubs	2
Conduit hub plug	1
Conduit sizes accommodated	½ in. (with fitting or bell end) ¾ in. 1 in. (with coupling)
Diameter of hole into riser	5 in. (127 mm); hole-cutting template provided

Materials of Construction

Splice box	PVC
Cord grip	Nylon
Cord grip plugs	EPDM rubber
O-rings	Buna rubber
Conduit hub plug	PVC
Riser adapter	ABS

Model Code for Ordering

External Splice Box

SBEX1-4 - ☐

Blank = no divider plates
P = divider plates

External splice box

Distributed By: