

CF6 Carbon Filter

Installation and Maintenance Instructions: CF6 Carbon Filter

Before You Begin:

The Orenco® CF6 Carbon Filter includes a CF6 filter unit and a bag of carbon material. The carbon must be removed from the bag and placed in the filter unit in order to operate effectively.

Installation Instructions

Step 1: Remove the carbon filter unit and the bag of carbon material from the shipping material.

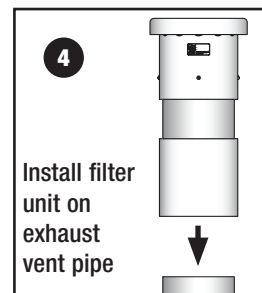
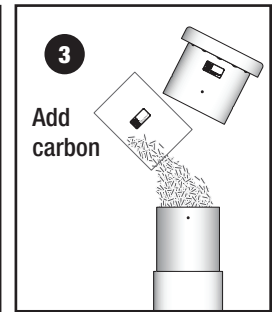
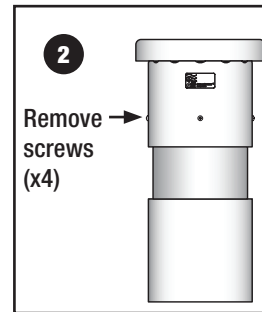
Step 2: Loosen the four screws that hold the top on the filter unit and separate the top and bottom sections of the unit.

Step 3: Pour the carbon material from the bag into the bottom section of the unit.

WARNING: Take precautions to avoid inhaling carbon dust when handling the carbon material!

Step 4: Reinstall the top onto the filter unit — taking care to line up the screw hole locations — and install the unit on the end of the exhaust vent pipe.

NOTE: Do not secure the carbon filter unit to the exhaust vent pipe with adhesive. If it is necessary to secure the filter unit to the exhaust vent pipe, use screws.



Maintenance Instructions

When odor from the carbon filter unit becomes noticeable, it is time to change the carbon material in the filter unit.

Step 1: Loosen any screws securing the carbon filter unit to the exhaust vent pipe and remove the carbon filter unit.

Step 2: Loosen the four screws that hold the top on the filter unit and separate the top and bottom sections of the unit.

Step 3: Dispose of the used carbon material in an appropriate refuse container.

Step 4: Refill the carbon filter unit with new carbon material. Six lbs (3 kg) of carbon material is required (two Orenco CFR-3 recharge bags) are required to recharge the filter unit.

WARNING: Take precautions to avoid inhaling carbon dust when handling the carbon material!

Step 5: Reinstall the top onto the filter unit — taking care to line up the screw hole locations. Reinstall the recharged filter unit — taking care to line up the screw hole locations if the filter unit is being secured to the exhaust vent pipe with screws.

NOTE: Do not secure the carbon filter unit to the exhaust vent pipe with adhesive. If it is necessary to secure the filter unit to the exhaust vent pipe, use screws.

