

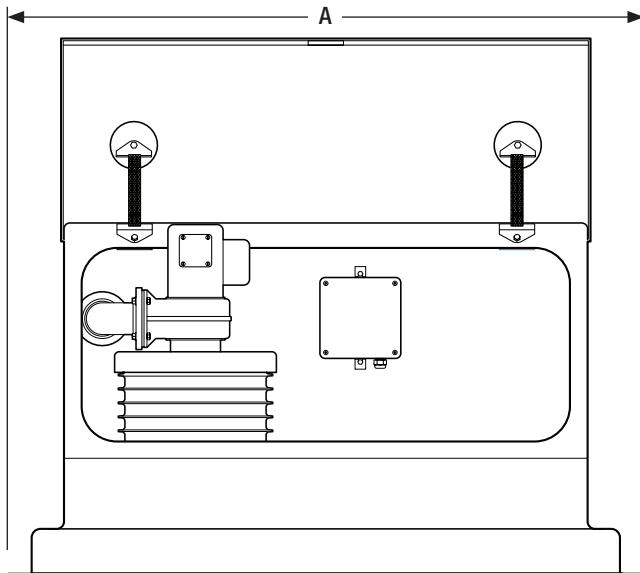
AdvanTex[®] Vent Fan Assembly

Applications

The AdvanTex[®] Vent Fan Assembly is used in commercial-sized AdvanTex Treatment Systems to gently pull air through the textile media, ensuring that adequate oxygen is available for biological treatment.

General

Orenco's AdvanTex[®] Vent Fan Assembly consists of a waterproof fiberglass enclosure with equipment for venting onsite wastewater treatment systems. One enclosure can hold a vent fan with a carbon filter basin, a splice box, and an optional heater. The carbon filter scrubs the air that the system exhausts. An optional heater can be added in areas where cold temperatures require that air is heated before it enters the AdvanTex treatment pods. The fan can be wired for 60 Hz or 50 Hz power and 120 or 240 VAC; heaters can be supplied for either 120 or 240 VAC power.



Vent fan enclosure, front view (lid open, showing components)

Standard Models

AXVFACF	Vent Fan Assembly, LMF-3 fan, tan
AXVFACF-GREEN	Vent Fan Assembly, LMF-3 fan, green
AXVFACF-HT	Vent Fan Assembly, LMF-3 fan, HT10 heater, tan
AXVFACF-HT-GREEN	Vent Fan Assembly, LMF-3 fan, HT10 heater, green

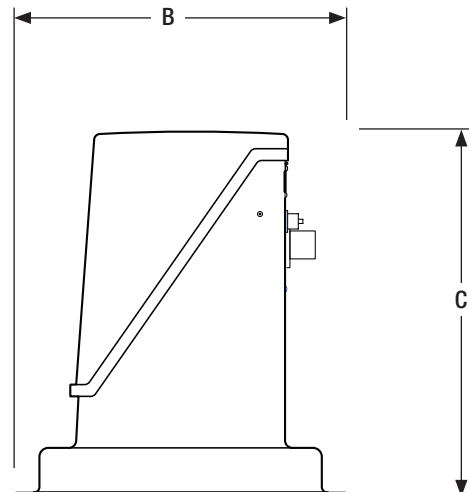
Vent Fan Enclosure

Materials of Construction

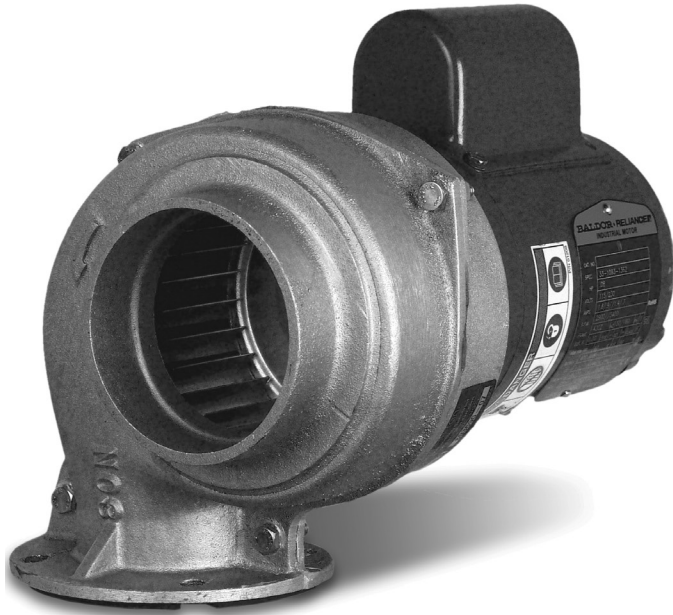
Shell	Fiberglass-reinforced polyester (FRP)
Hardware	Stainless steel
Exterior finish	Tan, textured, UV-resistant (optional green color available)
Straps	Nylon

Dimensions

A, in. (mm)	50 (1270)
B, in. (mm)	24 (610)
C, in. (mm)	30 (762)
Volume, ft ³ (m ³)	15.1 (0.43)
Footprint, ft ² (m ²)	8.3 (0.77)



Vent fan enclosure, side view (lid closed)



Vent Fan

Materials of Construction

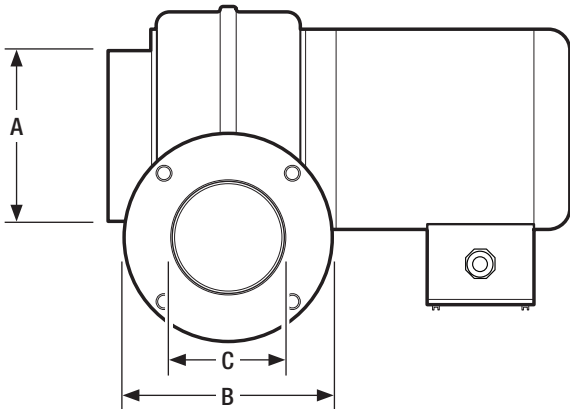
Housing	Aluminum
Wheel	Steel

Dimensions

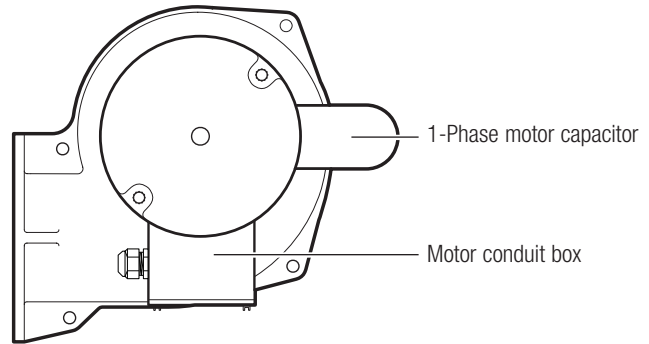
A, in. (mm)	4 (100)
B, in. (mm)	2-5/8 (67)
C, in. (mm)	4-7/8 (124)
Inlet nominal pipe size, in. (mm)	4 (100)

Performance Data

	60 Hz	50 Hz
Horsepower (kW)	0.08 (0.06)	0.08 (0.06)
Phase	1 phase	1 phase
Voltage	115/240	240
Amperage	1.4/0.7	0.9
RPM	3400	2900
CFM at 0 in. H ₂ O static pressure	245	205
CFM at 0.4 in. H ₂ O static pressure	220	170
CFM at 0.8 in. H ₂ O static pressure	190	130
CFM at 1.5 in. H ₂ O static pressure	120	n/a



AXVFAC vent fan, outlet view



AXVFAC vent fan, side view

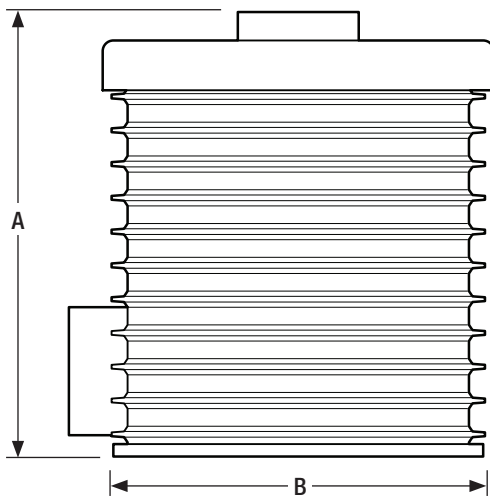
Carbon Filter Basin

Materials of Construction

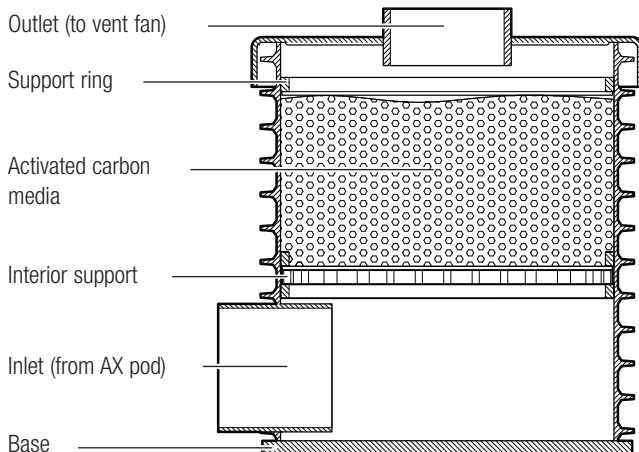
Housing	PVC
Bottom	Fiberglass-reinforced polyester (FRP)
Interior supports	Polypropylene grid, polyethylene screen
Support rings	PVC
Lid	Fiberglass
Fill material	Activated carbon media

Dimensions

A, in. (mm)	21.5 (546)
B, in. (mm)	12.0 (305)
Outlet diameter	Accepts nominal 3-in. PVC pipe
Inlet diameter	Accepts nominal 2-in. PVC pipe
Basin capacity, lbs (kg)	15 (6.8)



Carbon filter basin dimensions



Carbon filter basin components, cutaway view

Heater (Optional)

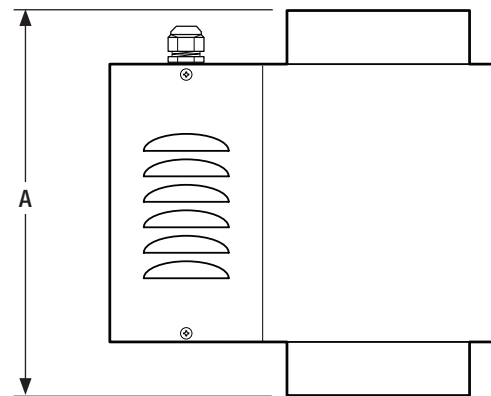
Dimensions

Outlet diameter	Fits nominal 3-in. Class 125 PVC pipe	
A, in. (mm)	11.75 (297)	
B, in. (mm)	8.25 (210)	
C, in. (mm)	11.25 (286)	

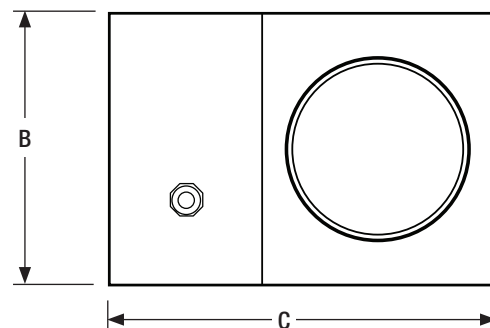
Performance Data

	120 VAC	240 VAC*
Watts	1000	1000
Phase	1	1
Amperage	8.3	4.2

* Compatible with 60 Hz and 50 Hz power sources.



Heater, side view



Heater, top view