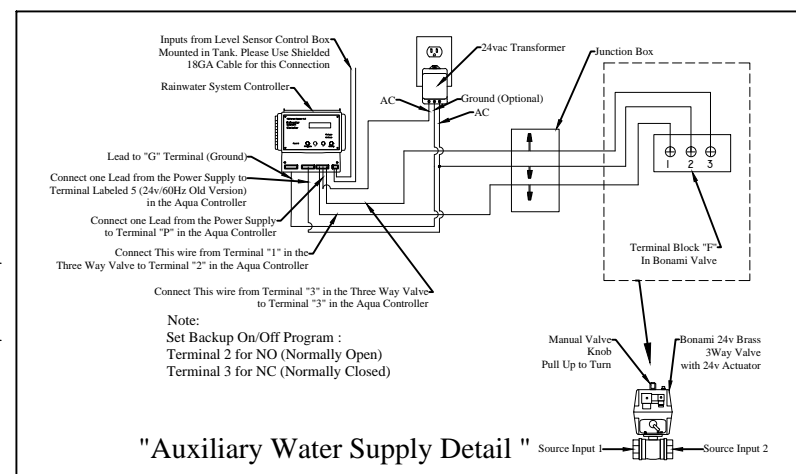
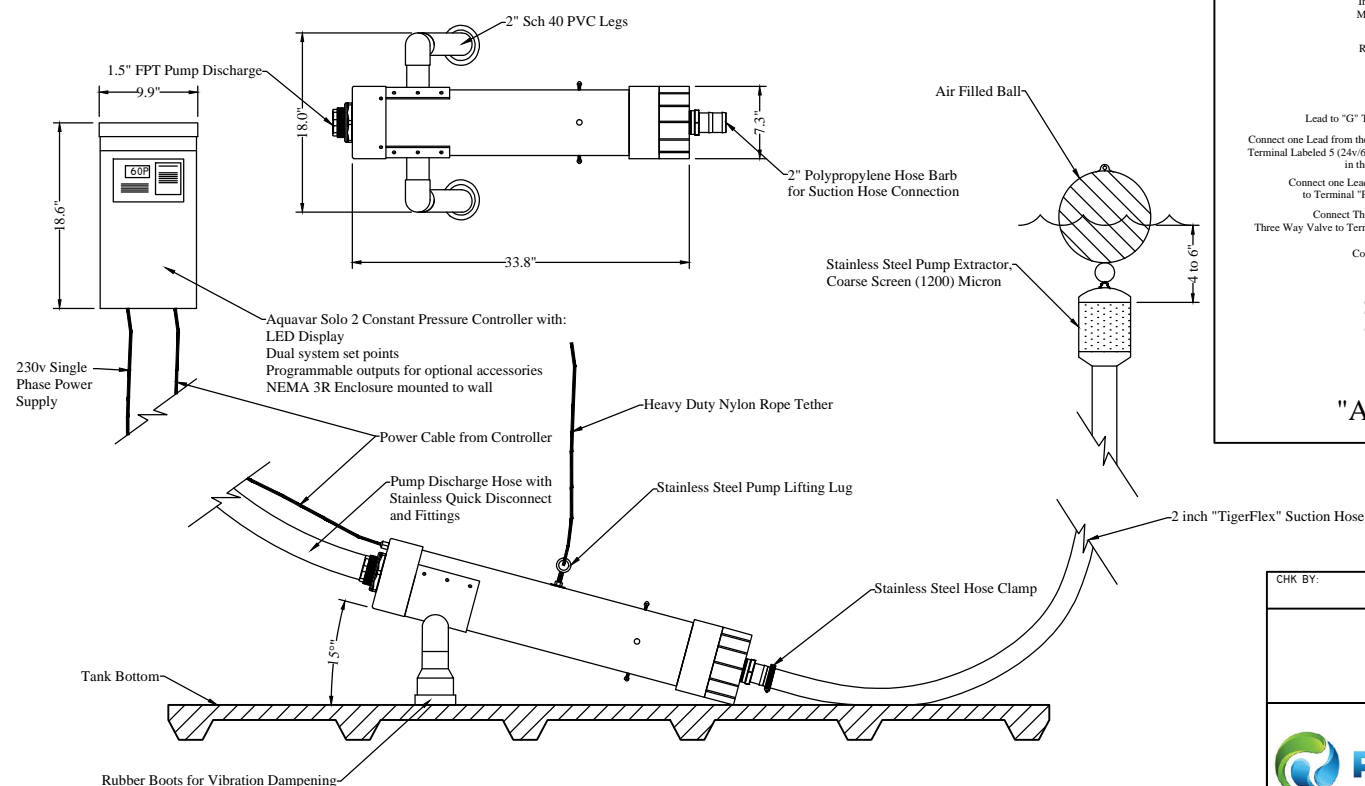
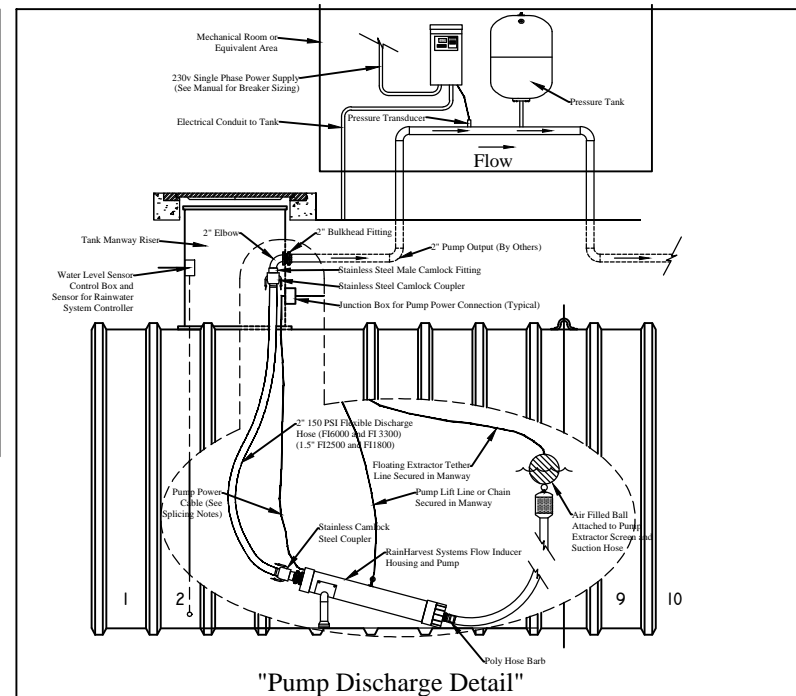
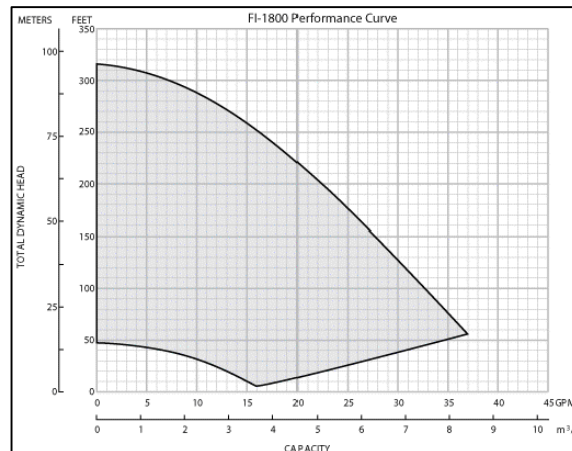


RainFlo Flow Inducer Pump Station

1. High Performance Three Phase 230 volt motor
2. Single phase 230V supply to automatic pump controller
3. Variable Speed, Pump Controller with Transducer (15' cable standard longer cables Available)
4. Water End with Sand and Abrasion Resistant Floating Stack Design
5. 2" Stainless Steel Floating Filter with 10' hose
6. Flow Induction Pump Chamber with 15 degree Inclination. Proven design for rainwater collection systems
7. 9 Gallon Inline Pressure Tank

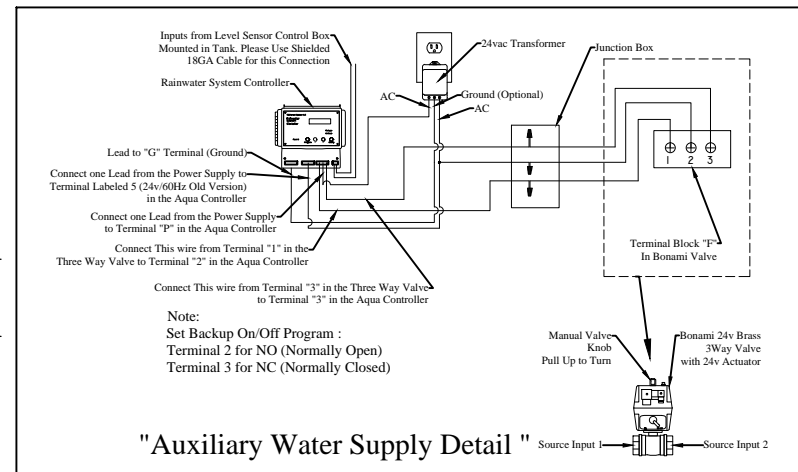
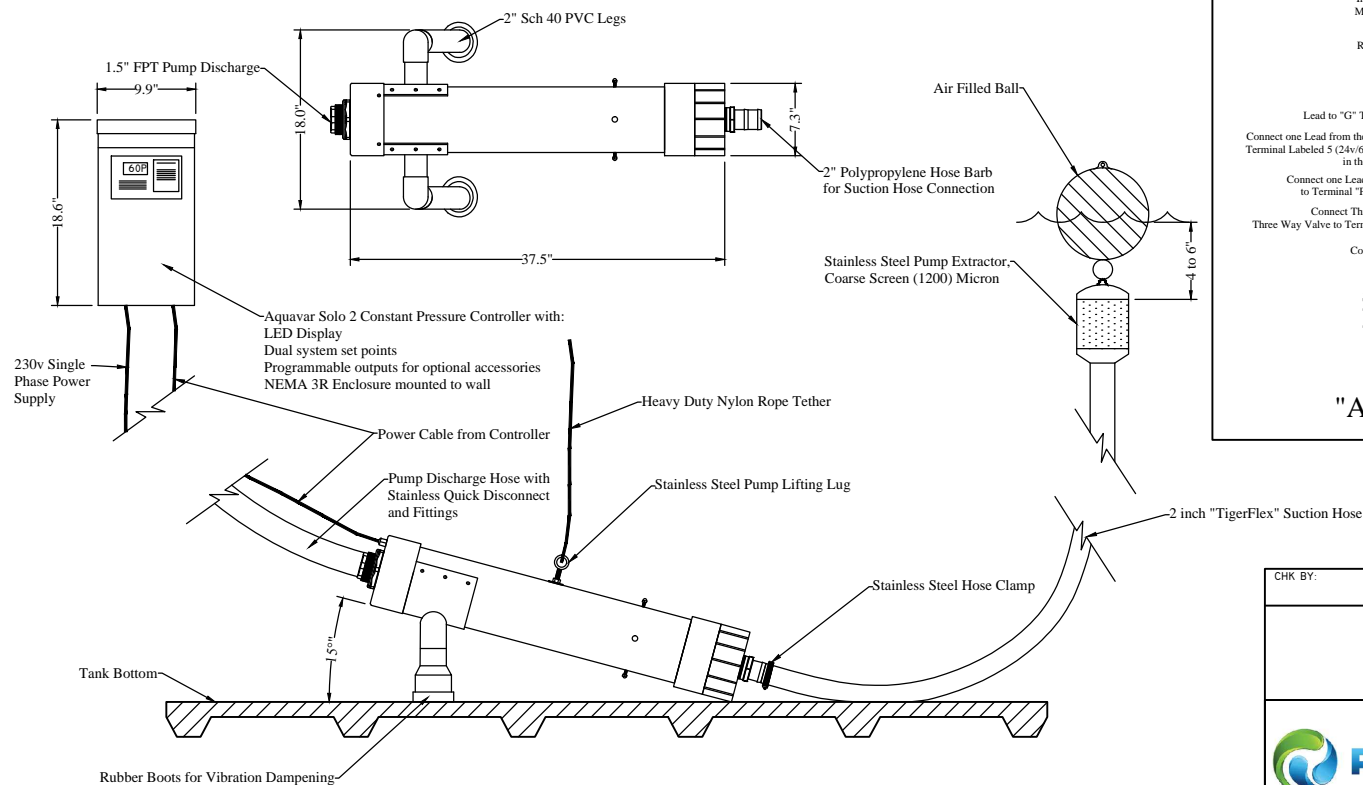
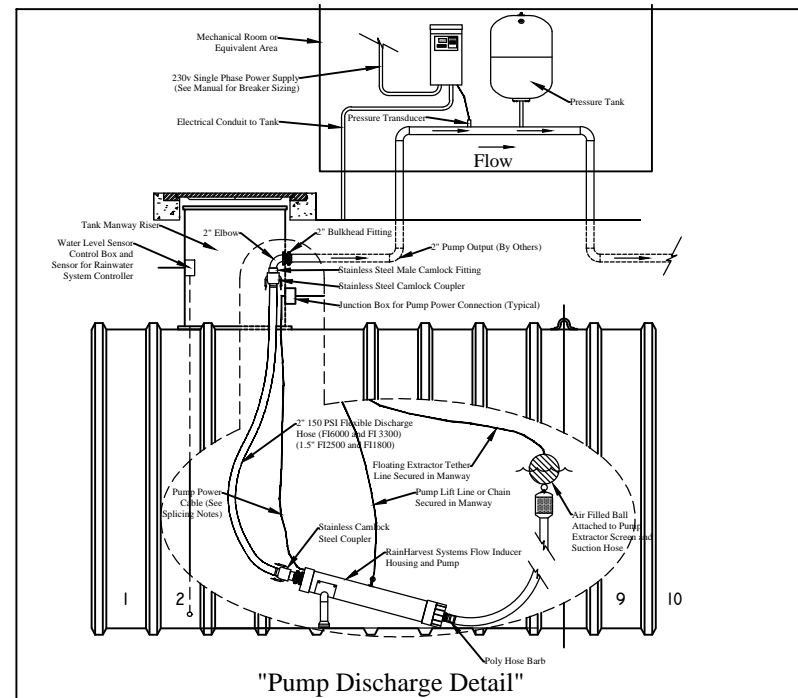
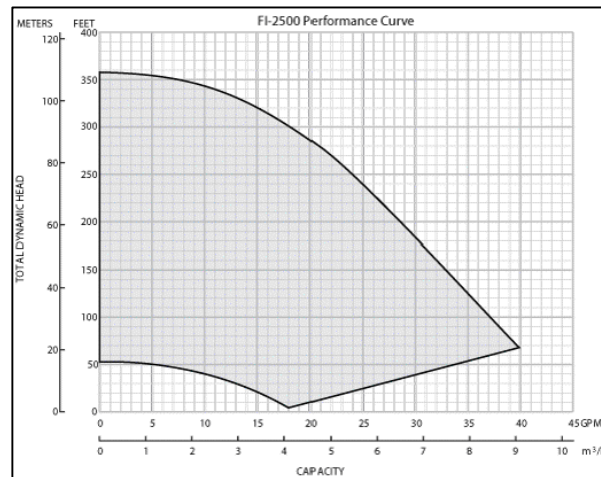


NOTE: This drawing is for illustrative purposes only. Actual systems and designs may vary. Always check with local building codes as they will apply. Electrical work to be performed by licensed professional. Points of use shall be labeled as: "Non Potable water, Do Not Drink!"

CHK BY:	APP BY:	DRAWN BY: CMG	QUOTE NO.:	SH.# 1 OF 1
RainFlo FI-1800 Pumping System and Backup Valve Control System				
		RainHarvest Systems LLC. 6075 Parkway North Drive Suite D Cumming, GA 30040 Tel: 770-889-2533 Fax: 770-889-2577		

RainFlo Flow Inducer Pump Station

1. High Performance Three Phase 230 volt Motor
2. Single phase 230V supply to automatic pump controller
3. Variable Speed, Pump Controller with Transducer (15' cable standard longer cables Available)
4. Water End with Sand and Abrasion Resistant Floating Stack Design
5. 2" Stainless Steel Floating Filter with 10' hose
6. Flow Induction Pump Chamber with 15 degree Inclination. Proven design for rainwater collection systems
7. 9 Gallon Inline Pressure Tank

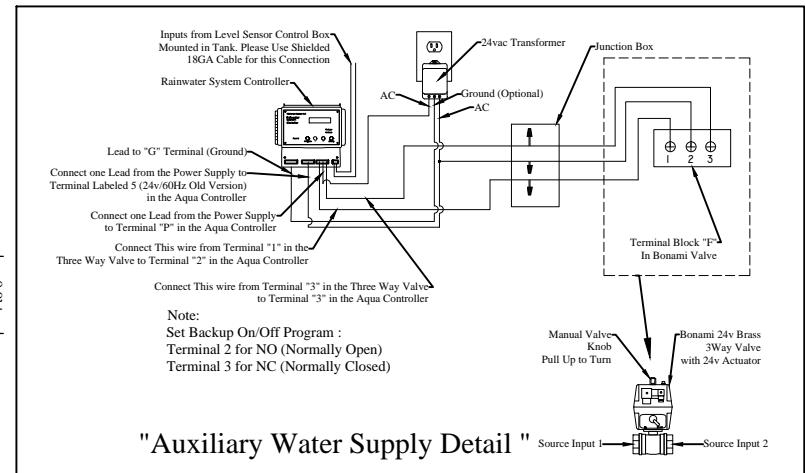
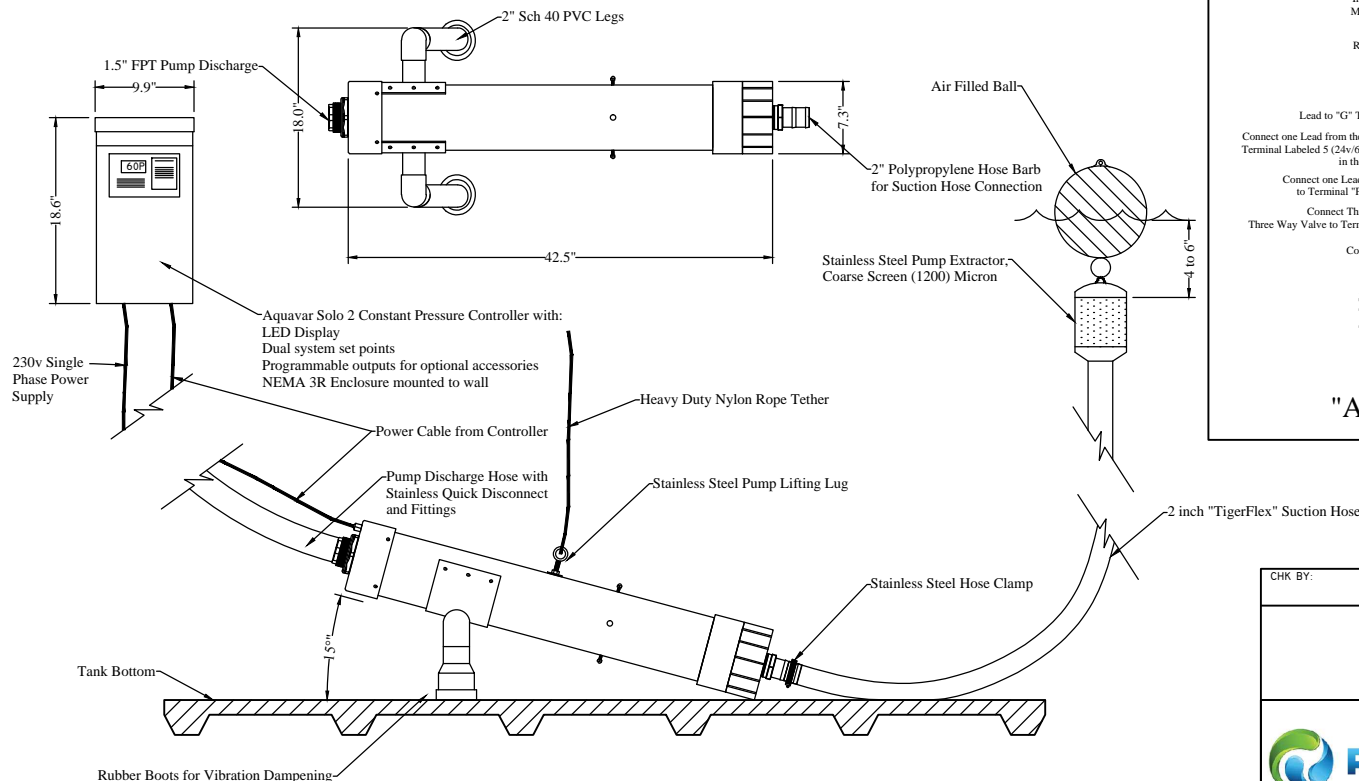
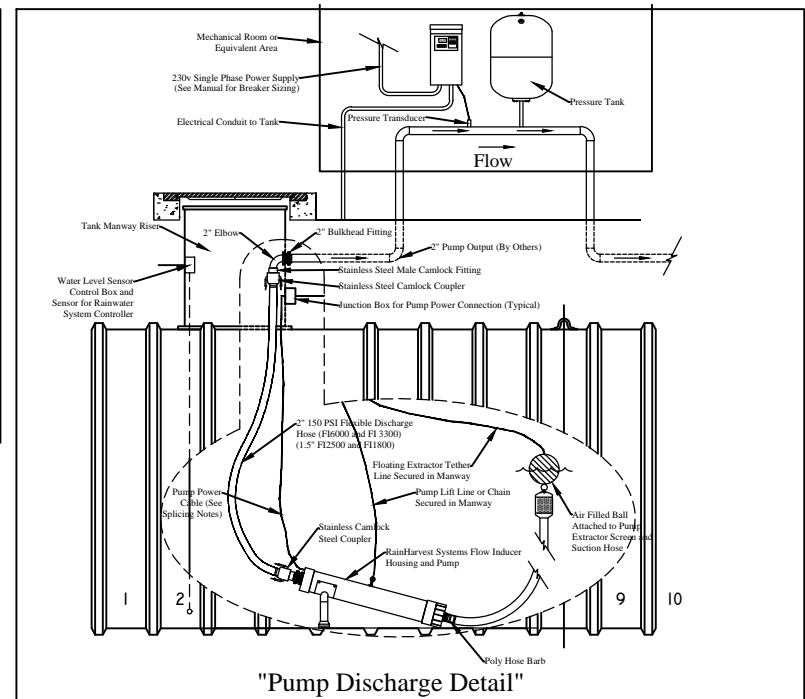
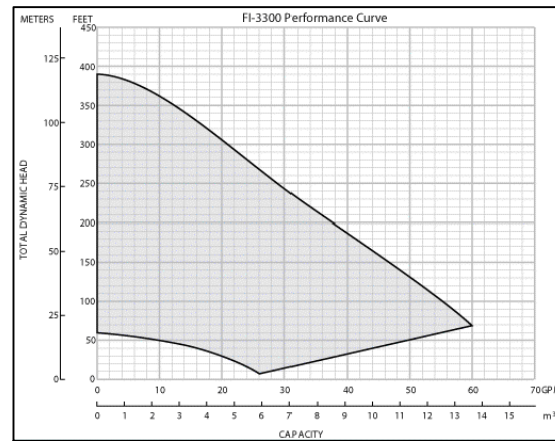


NOTE: This drawing is for illustrative purposes only. Actual systems and designs may vary. Always check with local building codes as they will apply. Electrical work to be performed by licensed professional. Points of use shall be labeled as: "Non Potable water, Do Not Drink!"

CHK BY:	APP BY:	DRAWN BY: CMG	QUOTE NO.:	SH.# 1 OF 1
RainFlo FI-2500 Pumping System and Backup Valve Control System				
		RainHarvest Systems LLC. 6075 Parkway North Drive Suite D Cumming, GA 30040 Tel: 770-889-2533 Fax: 770-889-2577		

RainFlo Flow Inducer Pump Station

1. High Performance Three Phase 230 volt Motor
2. Single phase 230V supply to automatic pump controller
3. Variable Speed, Pump Controller with Transducer (15' cable standard longer cables Available)
4. Water End with Sand and Abrasion Resistant Floating Stack Design
5. 2" Stainless Steel Floating Filter with 10' hose
6. Flow Induction Pump Chamber with 15 degree Inclination. Proven design for rainwater collection systems
7. 9 Gallon Inline Pressure Tank



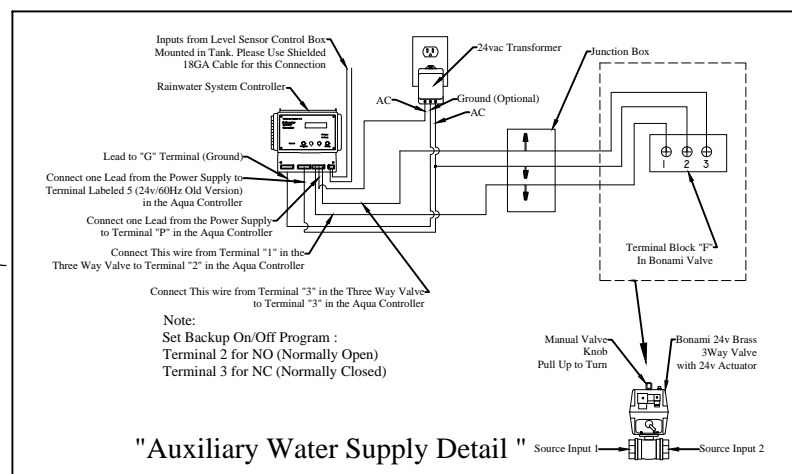
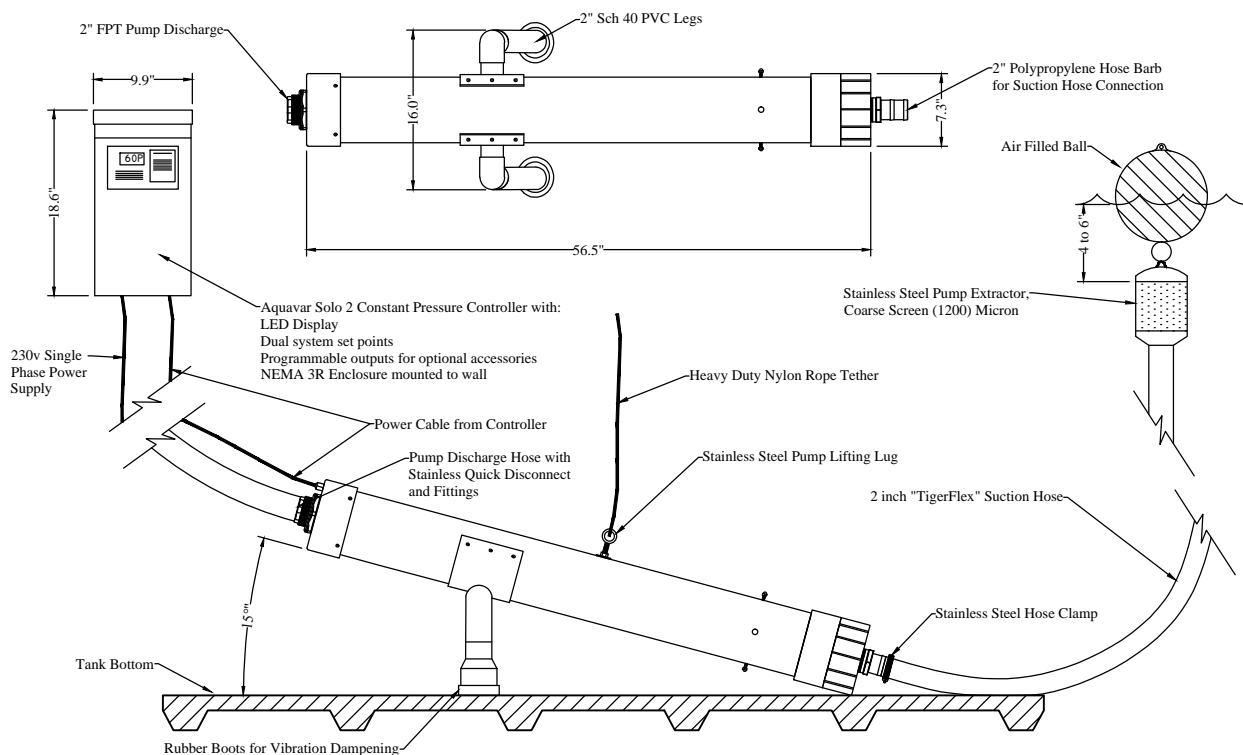
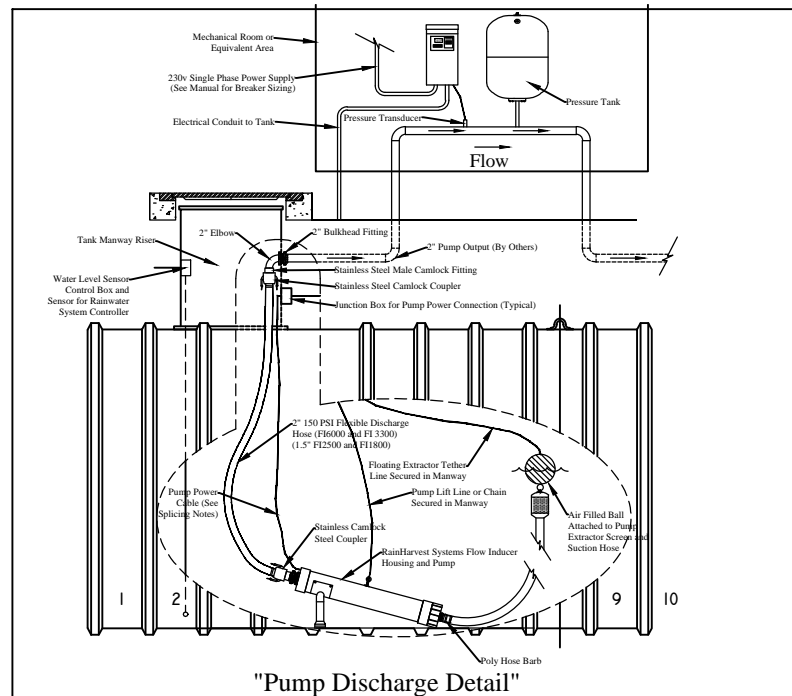
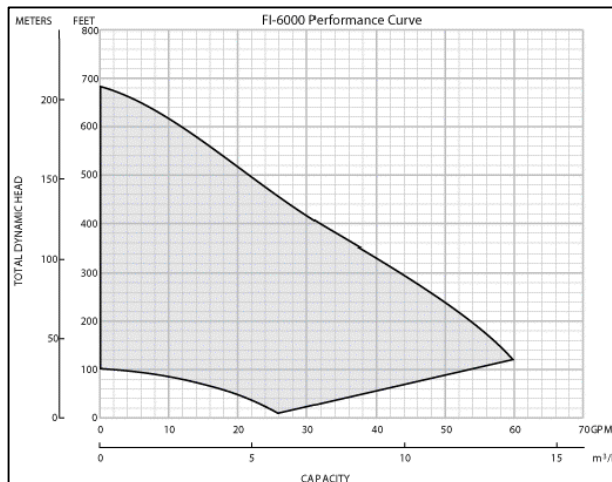
NOTE: This drawing is for illustrative purposes only. Actual systems and designs may vary. Always check with local building codes as they will apply. Electrical work to be performed by licensed professional. Points of use shall be labeled as: "Non Potable water, Do Not Drink!"

CHK BY:	APP BY:	DRAWN BY: CMG	QUOTE NO.	SH.# 1 OF 1
---------	---------	------------------	-----------	----------------

RainFlo FI-3300 Pumping System and Backup Valve Control System

RainHarvest Systems LLC.
6075 Parkway North Drive Suite D
Cumming, GA 30040
Tel: 770-889-2533 Fax: 770-889-2577

1. High Performance Three Phase 230 volt Motor
2. Single phase 230V supply to automatic pump controller
3. Variable Speed, Pump Controller with Transducer (15' cable standard longer cables Available)
4. Water End with Sand and Abrasion Resistant Floating Stack Design
5. 2" Stainless Steel Floating Filter with 10' hose
6. Flow Induction Pump Chamber with 15 degree Inclination. Proven design for rainwater collection systems
7. 13 Gallon Inline Pressure Tank



NOTE: This drawing is for illustrative purposes only. Actual systems and designs may vary. Always check with local building codes as they will apply. Electrical work to be performed by licensed professional. Points of use shall be labeled as: "Non Potable water, Do Not Drink!"

CHK BY:	APP BY:	DRAWN BY: CMG	QUOTE NO.	SH. # 1 OF 1
<h2 style="text-align: center;">RainFlo FI-6000 Pumping System and Backup Valve Control System</h2>				
		<p>RainHarvest Systems LLC. 6075 Parkway North Drive Suite D Cumming, GA 30040 Tel: 770-889-2533 Fax: 770-889-2577</p>		