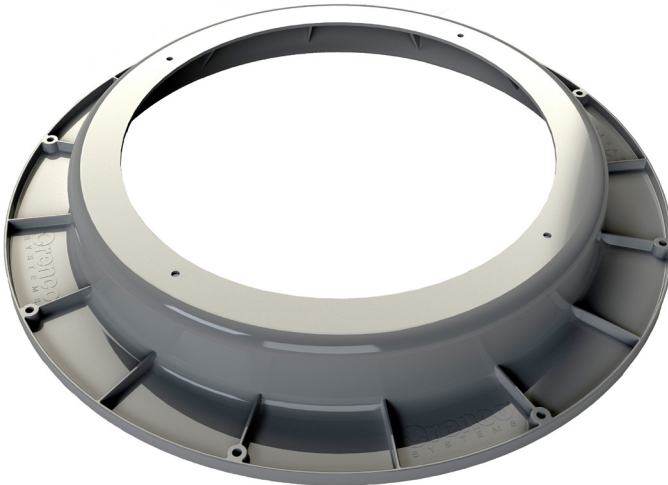


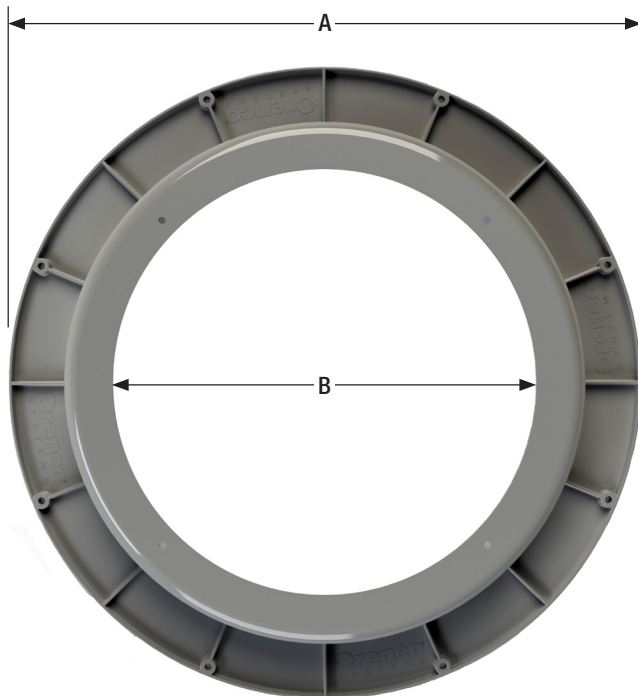
# FRTA24-RVF Tank Adapters

## Applications

Orenco's FRTA24-RVF tank adapters are used to help create watertight joints between a Roth MultiTank® and a 24-inch (600-mm) access riser.



FRTA24-RVF



FRTA24-RVF, top dimensional view

## General

The FRTA24-RVF adapter provides a wide, ABS interface for installing an access riser with a 24-inch (600-mm) nominal diameter. It is designed to create a watertight seal between the tank, adapter, and riser when correctly installed. A bolt-down kit (FRTA24-RBDKIT) consisting of stainless steel bolts and butyl tape secures the adapter to the Roth MultiTank.

## Standard Models

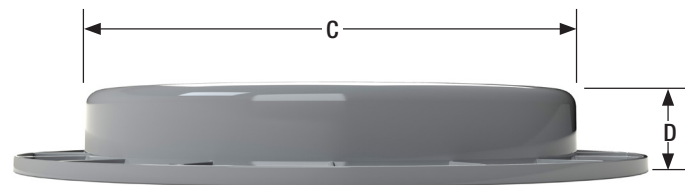
FRTA24-RVF, FRTA24-RBDKIT

## Materials of Construction

Adapter	ABS
Anchor bolts	Stainless steel
Sealant tape	Butyl

## Specifications

Dimension, in. (mm)	FRTA24-RVF
A	30 (762)
B	19 (483)
C	23½ (597)
D	3¼ (94)
Bolt hole diameter	⅝ (8)



FRTA24-RVF, side dimensional view