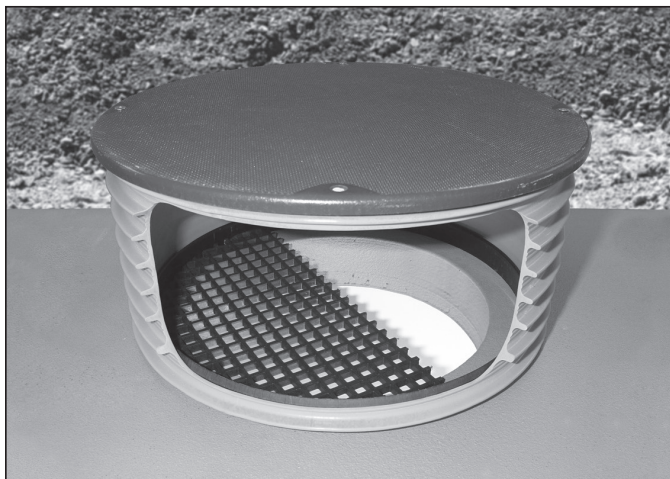
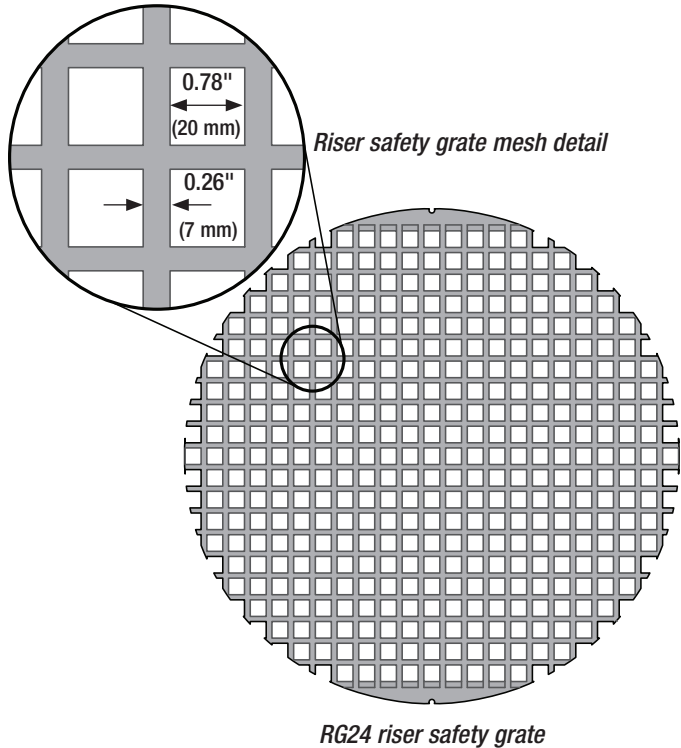


Riser Safety Grate

Applications

Orenco's non-corroding polypropylene riser safety grates rest inside of an access riser, to help prevent people or tools from falling into the tank opening. They are sized to fit inside of Ultra-Rib™, Perma-Loc™, Kor FLO™, and equivalent risers.



Properly installed, the riser safety grate rests between the access riser and the tank opening. (Cutaway riser and cutaway grate shown for display purposes.)

General

Orenco's riser safety grates:

- Are easy to install and remove.
- Allow service providers to rest filters or other components on the grate inside the riser to clean and hose them off.
- Prevent soil buildup when installed in the bottom of a valve box.
- Fit most brands of ribbed PVC profile pipe.
- Are made of noncorroding polypropylene.

Standard Models

RG12, RG18, RG21, RG24

Materials of Construction:

Riser grate Polypropylene

Specifications

	RG12	RG18	RG21	RG24
Diameter, in. (mm)	11.70 (297)	17.50 (445)	20.50 (521)	23.25 (591)
Thickness, in. (mm)	0.50 (13)	0.50 (13)	0.50 (13)	0.50 (13)
Weight, lb (kg)	0.70 (0.3)	1.7 (0.8)	2.3 (1.0)	3.0 (1.4)
Max. load, lb (kg)	350 (159)	350 (159)	350 (159)	350 (159)
Max. tank opening size, in. (mm)*	10.0 (254)	15.5 (394)	18.5 (470)	20.0 (508)

* Do not use Riser Safety Grates to cover tank openings larger than the maximum tank opening size listed!