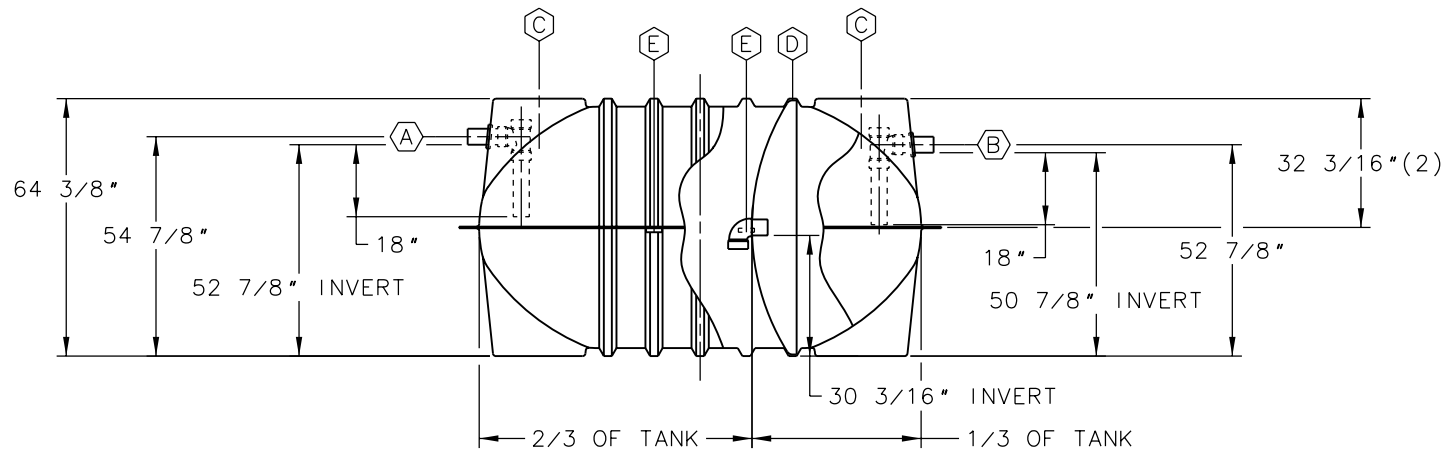
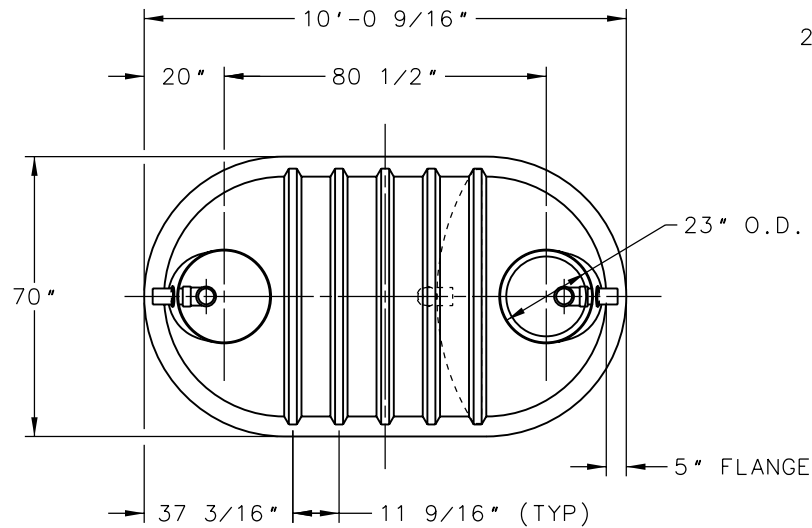


NOTE:

- 1 - 23" O.D. ADAPTER SURFACES ACCEPT STANDARD 24" I.D. FRP OR PVC RISERS.
- 2 - TANK WILL HAVE IAPMO LABEL.



| | |
|---|--|
| A | 4" DIA SCH 40 PVC INLET PIPE WITH INTERNAL SANITARY TEE & PIPES |
| B | 4" DIA SCH 40 PVC OUTLET PIPE WITH INTERNAL SANITARY TEE & PIPES |
| C | 23" O.D. x 2" HIGH RISER ADAPTER SURFACE |
| D | BAFFLE WALL WITH 4" DIA SCH 40 PVC STREET ELBOW SINGLE CROSS-OVER & 3" DIA VENT HOLE |
| E | LIFTING LUG (2 ON EACH SIDE OF TANK, 4 LUGS TOTAL) |

XERXES[®]
a zcl company

| | | |
|-------|------|--|
| TITLE | | RST-11 1000 IAPMO - Z1000 (SEPTIC) |
| DATE | 1-12 | DR. NO. S10-956.03 |