

PVC Pump Basins

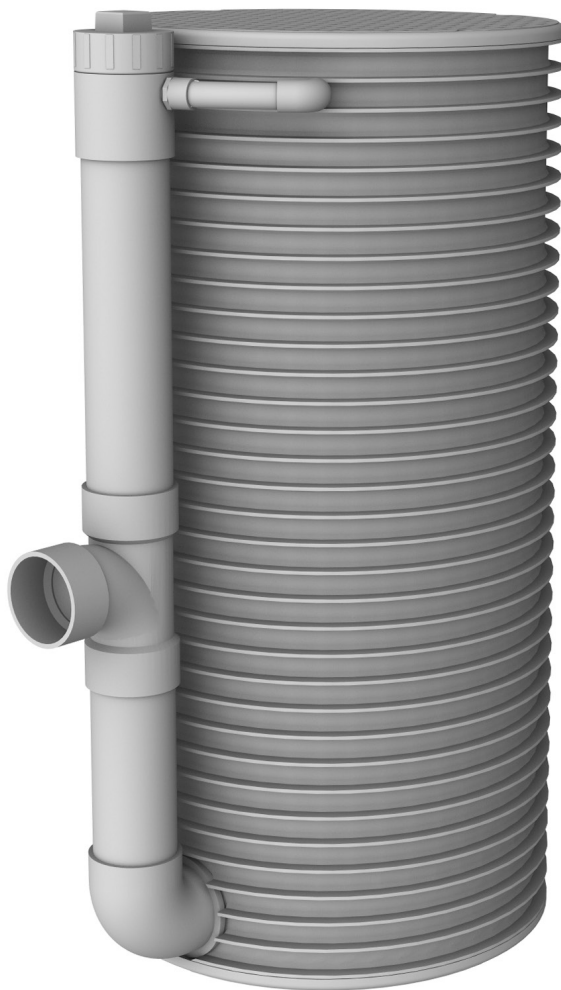
Applications

Orenco® PVC Pump Basins are designed to house effluent pumps, sewage pumps, or grinder pumps in wastewater pumping applications. They are not IAPMO listed.

General

Orenco PVC Pump Basins come in 18-, 24-, and 30-inch (450-, 600-, and 750-mm) nominal diameters. Bases are fiberglass, attached with epoxy. Watertight EPDM grommets seal all piping penetrations. A 4-inch (100-mm) inlet elbow and holes to accommodate splice boxes and discharge piping are located and sized to specific need. Fiberglass access lids and stainless steel fasteners are sold separately.

Optional equipment is available.



24-inch (600-mm) PB24XX PVC Pump Basin
(Shown with optional cleanout and vent)

Standard Models

PB1854, PB2454, PB3054
(Custom basins are available for specific configurations.)

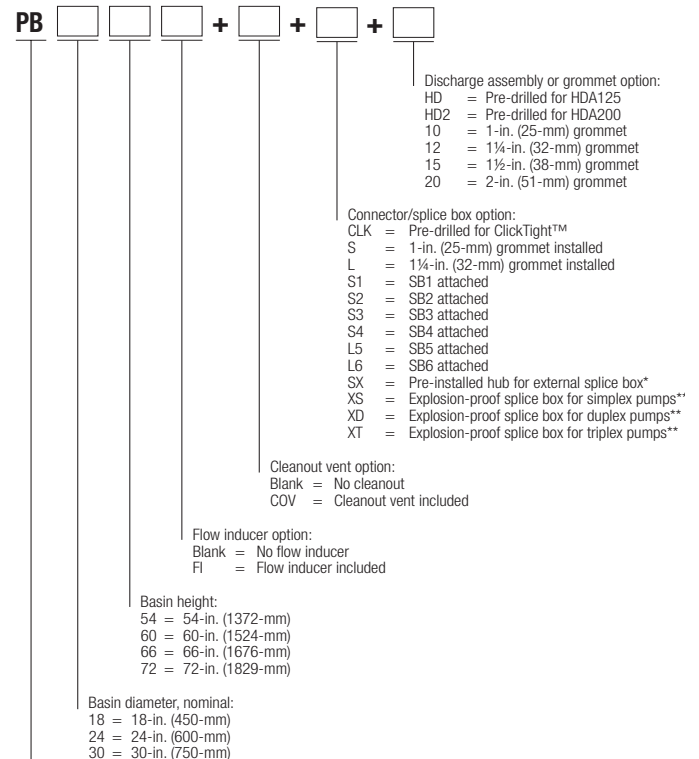
Materials of Construction

Ribbed pipe	PVC
Base	Fiberglass-reinforced polyester
Grommets	EPDM

Specifications

Model	O.D., including rib in. (mm)	I.D. in. (mm)	Liquid capacity gal./in. (L/mm)
PB18XX	19.44 (494)	17.50 (445)	1.06 (0.16)
PB24XX	25.63 (651)	23.50 (597)	1.88 (0.28)
PB30XX	32.13 (816)	29.50 (749)	2.96 (0.44)

Product Code Diagram



Pump basin, PVC

* Requires minimum 18-in. (457-mm) riser height

** For Class I Division 1 environments