

Fiberglass Pump Basins

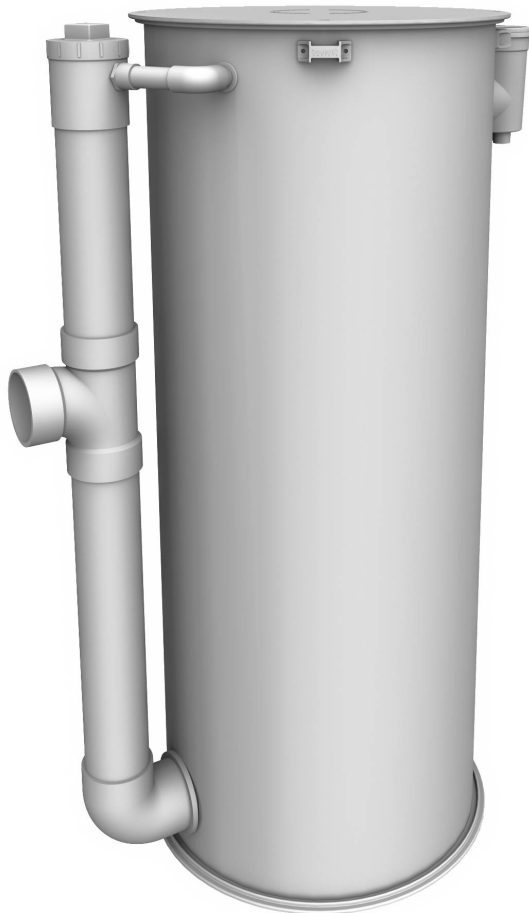
Applications

Orenco® Fiberglass (FRP) Pump Basins are designed to house effluent pumps, sewage pumps, or grinder pumps in wastewater pumping applications. They are not IAPMO listed.

General

Orenco FRP Pump Basins come in 24- and 30-in. (600- and 750-mm) nominal diameters. Bases are fiberglass, attached with epoxy. Watertight EPDM grommets seal all piping penetrations. A 4-in. (100-mm) inlet elbow and holes to accommodate splice boxes and discharge piping are located and sized to specific need. Fiberglass access lids and stainless steel fasteners are sold separately.

Optional equipment is available.



24-in. (600-mm) PBF24XX FRP Pump Basin
(Shown with optional cleanout and vent)

Standard Models

PBF2454, PBF3054
(Custom basins are available for specific configurations.)

Materials of Construction

FRP pipe	Fiberglass-reinforced polyester
Base	Fiberglass-reinforced polyester
Grommets	EPDM

Specifications

Model	O.D., including rib in. (mm)	I.D. in. (mm)	Liquid capacity gal./in. (L/mm)
PB24XX	25.63 (651)	23.50 (597)	1.88 (0.28)
PB30XX	32.13 (816)	29.50 (749)	2.96 (0.44)

Product Code Diagram

PBF + + +

Discharge grommet option, in. (mm):
 HD = Pre-drilled for HDA125
 HD2 = Pre-drilled for HDA200
 10 = 1-in. (25-mm) grommet
 12 = 1¼-in. (32-mm) grommet
 15 = 1½-in. (38-mm) grommet
 20 = 2-in. (51-mm) grommet

Connector/splice box option:

CLK = Pre-drilled for ClickTight™
 S = 1-in. (25-mm) grommet installed
 L = 1¼-in. (32-mm) grommet installed
 S1 = SB1 attached
 S2 = SB2 attached
 S3 = SB3 attached
 S4 = SB4 attached
 L5 = SB5 attached
 L6 = SB6 attached
 SX = Pre-installed hub for external splice box*
 XS = Explosion-proof splice box for simplex pumps**
 XD = Explosion-proof splice box for duplex pumps**
 XT = Explosion-proof splice box for triplex pumps**

Cleanout vent option:

Blank = no cleanout
 COV = cleanout vent included (4-in. only)

Flow inducer option:

Blank = no flow inducer
 FI = flow inducer included

Basin height, in. (mm):

54 = 54-in. (1372-mm)
 60 = 60-in. (1524-mm)
 66 = 66-in. (1676-mm)
 72 = 72-in. (1829-mm)

Basin diameter, in. (mm):

24 = 24-in. (600-mm)
 30 = 30-in. (750-mm)

Pump basin, FRP

* Requires minimum 18-in. (457-mm) pump basin height

** For Class I Division 1 environments